

BELZONA REPAIRS LOOSE WEAR RING

CUSTOMER

Power plant - Egypt

APPLICATION DATE

February, 2003

APPLICATION SITUATION

Wear ring in main cooling water pump

PROBLEM

Ring had become loose in its housing.

PRODUCTS

Belzona® 1321 (Ceramic S-Metal)

SUBSTRATE

Mild Steel

APPLICATION METHOD

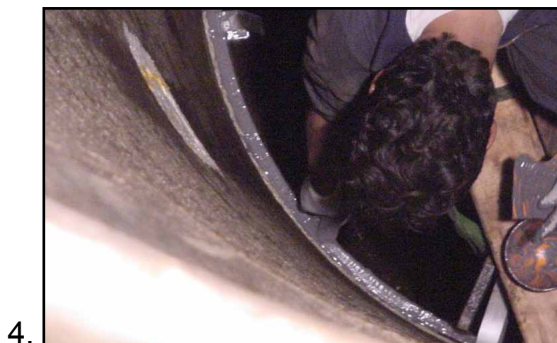
Application was carried out in accordance with modified version of Belzona® Know-How System Leaflet CEP-2.

BELZONA FACTS

Belzona solved this potentially serious problem with a simple, fast and cost effective solution which reduced downtime and maintenance costs.

PICTURES

1. General view of the pump
2. Corrosion caused wear at the ring
3. Application of the first layer of Belzona® 1321
4. Removing excess material after injecting the second layer of Belzona® 1321



For more examples of *Belzona Know-How In Action*, please visit <http://khia.belzona.com>



ISO 9001:2008
Q 09335
ISO 14001:2004
EMS 509612

Belzona products are
manufactured under an ISO
9000 Registered Quality
Management System.

UK • USA • Canada • China
www.belzona.com


BELZONA®
Repair • Protect • Improve