

PUMP REPAIR AND EFFICIENCY ENHANCEMENT WITH BELZONA

CUSTOMER

Drinking Water Supplier, Portugal

APPLICATION DATE

February 2004

APPLICATION SITUATION

Large horizontal split case pump housing

PROBLEM

The pump had significant corrosion.

PRODUCTS

Belzona® 1111 (Super Metal)

Belzona® 1341 (Supermetalgilde)

SUBSTRATE

Brass and cast iron

APPLICATION METHOD

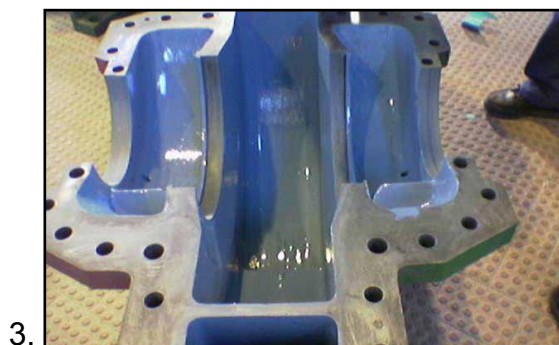
Application was carried out in accordance with Belzona Know-How System Leaflet CEP-10.

BELZONA FACTS

The client realised a 7% increase in efficiency.

PICTURES

1. The severe localised corrosion
2. Application of Belzona® 1111
3. The completed repair



For more examples of *Belzona Know-How In Action*, please visit <http://khia.belzona.com>



ISO 9001:2008
Q 09335
ISO 14001:2004
EMS 509612

Belzona products are
manufactured under an ISO
9000 Registered Quality
Management System.

UK • USA • Canada • China
www.belzona.com


BELZONA®
Repair • Protect • Improve