

LOWER HALF OF KNOCK OUT VESSEL PROTECTED WITH BELZONA

CUSTOMER

Oil Refinery-Australia

APPLICATION DATE

May 2004

APPLICATION SITUATION

Liquid knock out for flare gases. Also exposed to MEK, Toluene and gasoline.

PROBLEM

Internal erosion corrosion in lower section caused by sour water. Vessel regularly steamed out.

PRODUCTS

Belzona® 1311 (Ceramic R-Metal)

Belzona® 1391 (Ceramic HT Metal)

SUBSTRATE

Steel

APPLICATION METHOD

Application was carried out in accordance with Belzona Know-How System Leaflet TCC-5. Belzona® 1311 was used to repair pitting (particularly in 4-8 o'clock positions) and to smooth out weld repairs after which the lower half of the vessel was coated with Belzona® 1391.

BELZONA FACTS

Previous coating had failed. Belzona had previously been used for local repairs before this shut-down and had proven itself in the environment.

PICTURES

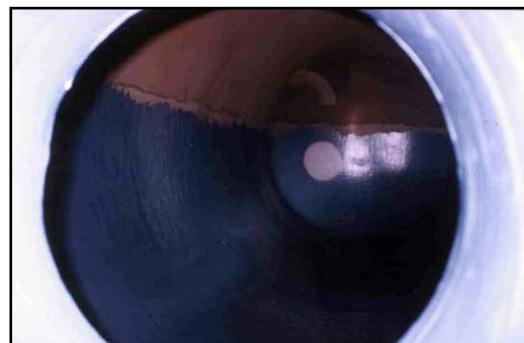
1. Typical limited access to vessel through manway
2. Application of Belzona® 1391 underway
3. Completed application



1.



2.



3.

For more examples of *Belzona Know-How In Action*, please visit <http://khia.belzona.com>



ISO 9001:2008
Q 09335
ISO 14001:2004
EMS 509612

Belzona products are
manufactured under an ISO
9000 Registered Quality
Management System.

UK • USA • Canada • China
www.belzona.com


BELZONA®
Repair • Protect • Improve