

BELZONA REPAIR TO GAS BREAKER

CUSTOMER

Electrical utility in Oklahoma

APPLICATION DATE

November 2005

APPLICATION SITUATION

Aluminum gas breaker at substation outside natural gas powerplant

PROBLEM

Gas was quickly escaping and the utility had to send maintenance crews to refill the breaker every 2 weeks so that it would not lock-out.

PRODUCTS

Belzona® 1221 (Super E-Metal)

SUBSTRATE

Aluminum

APPLICATION METHOD

Application was carried out according to Belzona Know-How System Leaflet VPF-11a.

BELZONA FACTS

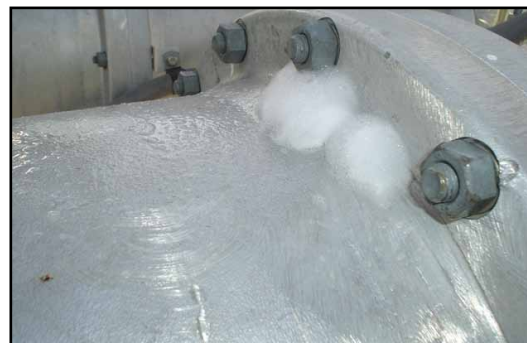
The gas is expensive and breaker was becoming a headache to constantly refill. The repair was quickly completed in hours and was the most cost effective solution.

PICTURES

1. The breaker leaking gas
2. Soapy water sprayed to detect location of leak
3. Area prepared for application by grinding
4. Completed repair soaked in soapy water to ensure no leaks



1.



2.



3.



4.

For more examples of *Belzona Know-How In Action*, please visit <http://khia.belzona.com>



ISO 9001:2008
Q 09335
ISO 14001:2004
EMS 509612

Belzona products are
manufactured under an ISO
9000 Registered Quality
Management System.

UK • USA • Canada • China
www.belzona.com


BELZONA®
Repair • Protect • Improve