

BELZONA INCREASES JET DRIVE EFFICIENCY ON THIS HIGH SPEED YACHT

CUSTOMER

Private, high-speed motor yacht in Florida, USA

APPLICATION DATE

1999

APPLICATION SITUATION

Jet Drive Transom Bowl on a large high speed yacht.

PROBLEM

Galvanic corrosion and cavitation. Erosion accelerated by entrained solids.

PRODUCTS

Belzona® 1111 (Super Metal)

Belzona® 1341 (Supermetalgilde)

SUBSTRATE

Aluminum

APPLICATION METHOD

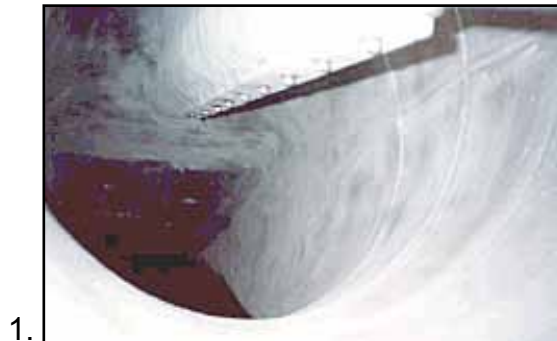
After blasting the substrate to a 3-mil profile, all the irregular surfaces were faired with Belzona® 1111 and then coated with two coats of Belzona® 1341. The application was carried out in accordance with Belzona Know-How System Leaflets SOS-1 and SOC-2.

BELZONA FACTS

There are two approvals for this particular application, one by KaMeWa North America and the other by ABS. The customer is pleased with the performance of the Belzona coating and refurbishes the jet drive every few years to maintain the hydrodynamic performance of the jet drive bowl.

PICTURES

1. Inlet tunnel, prior to surface preparation
2. Application in progress
3. & 4. Ready for service



For more examples of *Belzona Know-How In Action*, please visit <http://khia.belzona.com>



ISO 9001:2008
Q 09335
ISO 14001:2004
EMS 509612

Belzona products are
manufactured under an ISO
9000 Registered Quality
Management System.

UK • USA • Canada • China
www.belzona.com


BELZONA®
Repair • Protect • Improve