

BELZONA FOR EMERGENCY LEAK SEALING

CUSTOMER

Water treatment plant in North Florida, U.S.A.

APPLICATION DATE

October 1992

APPLICATION SITUATION

Wall of a filter/settling tank.

PROBLEM

Leaking in the joint between a new, and existing tank. Loss of water estimated at one million gallons per month.

PRODUCTS

Belzona® 4211 (Magma Stop)

Belzona® 4221 (Magma Seal)

SUBSTRATE

Concrete and reinforcing steel.

APPLICATION METHOD

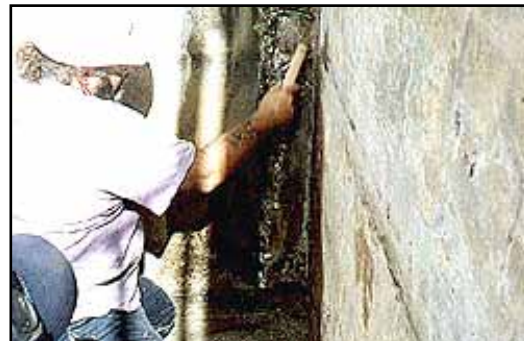
The application was carried out in accordance with Belzona Know-How System Leaflet WPA-7.

BELZONA FACTS

This repair was carried out with a stream of water flowing out of the crack. Because of the anticipated movement in this joint, the repair was expected to be temporary. It did, in fact begin leaking some time later, but at a much reduced rate. When the tank is drained, a more permanent Belzona repair will be carried out.

PICTURES

1. Cleaning away old concrete
2. The completed repair



For more examples of *Belzona Know-How In Action*, please visit <http://khia.belzona.com>



ISO 9001:2008
Q 09335
ISO 14001:2004
EMS 509612

Belzona products are
manufactured under an ISO
9000 Registered Quality
Management System.

UK • USA • Canada • China
www.belzona.com


BELZONA®
Repair • Protect • Improve