

SEVERE EROSION IS NO MATCH FOR BELZONA

CUSTOMER

Sugar mill in Florida, U.S.A.

APPLICATION DATE

May 1994

APPLICATION SITUATION

End suction pump for sugar liquor.

PROBLEM

The sugar liquor pump housing near the impeller had suffered from severe erosion and exhibited extensive metal loss.

PRODUCTS

Belzona® 1111 (Super Metal)

Belzona® 1391 (Ceramic HT Metal)

SUBSTRATE

316 Stainless steel

APPLICATION METHOD

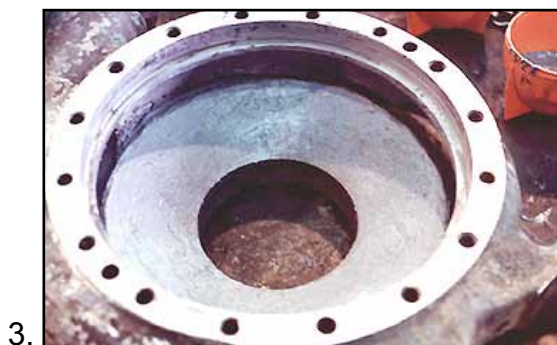
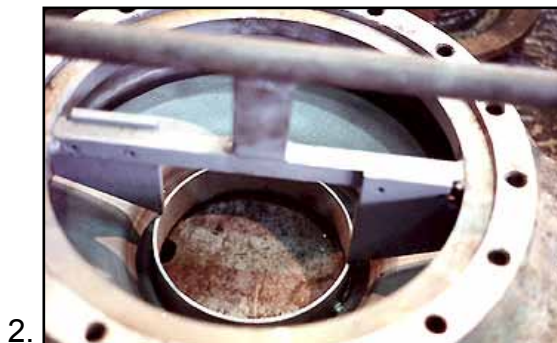
The application was carried out in accordance with a modified version of Belzona Know-How System Leaflets CEP-3 and CEP-5. A fixture was used to rebuild the extensive metal loss and maintain tolerances with the impeller.

BELZONA FACTS

Two housings were completed. The replacement cost for these housings would have been \$11,000. The Belzona solution was \$1,665.00 which is an 85% cost savings versus replacement.

PICTURES

1. Housing demonstrating extensive wear
2. A template was used to restore the original profile
3. Housing rebuilt to the original profile and coated to handle high temperature service



For more examples of *Belzona Know-How In Action*, please visit <http://khia.belzona.com>



Belzona products are manufactured under an ISO 9000 Registered Quality Management System.

UK • USA • Canada • China
www.belzona.com

