

BELZONA REPAIR OF TWO-STAGE PUMP

CUSTOMER

Power Industry, Bulgaria

APPLICATION DATE

February 2002

APPLICATION SITUATION

2-Stage Centrifugal Pump (Model 3B200x2)

PROBLEM

Erosion, wear and corrosion of sealing elements and pump casing.

PRODUCTS

Belzona® 1111 (Super Metal)

Belzona® 1311 (Ceramic R-Metal)

Belzona® 1321 (Ceramic S-Metal)

SUBSTRATE

Cast iron

APPLICATION METHOD

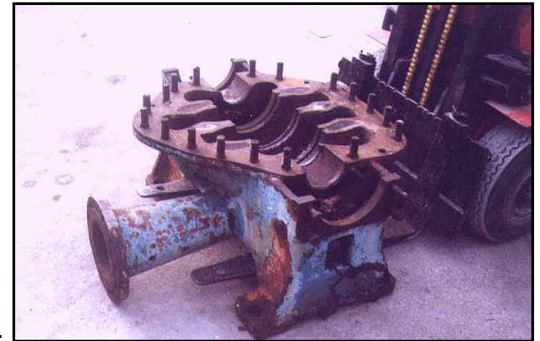
Application procedures were carried out in accordance with Belzona Know-How System Leaflets CEP-1 and -2.

BELZONA FACTS

Pump refurbished without machining and has saved time and money over traditional repairs or replacement.

PICTURES

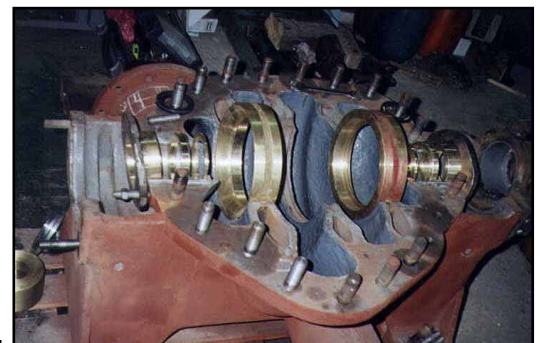
1. Pump surface before preparation.
2. Belzona® 1321 applied to grit blasted surface.
3. Refurbishing seal ring seats and bearing seats by forming.



1.



2.



3.

For more examples of *Belzona Know-How In Action*, please visit <http://khia.belzona.com>



ISO 9001:2008
Q 09335
ISO 14001:2004
EMS 509612

Belzona products are
manufactured under an ISO
9000 Registered Quality
Management System.

UK • USA • Canada • China
www.belzona.com


BELZONA®
Repair • Protect • Improve