

BELZONA PUMP REBUILD

CUSTOMER

Water Utility, Oklahoma USA

APPLICATION DATE

March 2008

APPLICATION SITUATION

Old split case pumps dating back to 1960.

PROBLEM

Many of the pumps have never been rebuilt and severe pitting was present. In some cases, it went almost through the casing.

PRODUCTS

Belzona® 1311 (Ceramic R-Metal)

Belzona® 1341N (Supermetalgilde)

SUBSTRATE

Cast iron

APPLICATION METHOD

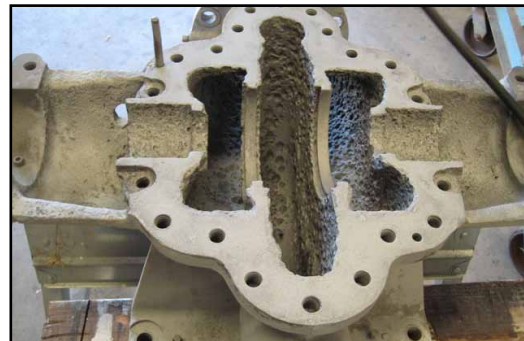
Application was carried out in accordance with Belzona Know-How System Leaflets CEP-1, CEP-3, and CEP-5.

BELZONA FACTS

It is substantially more cost-effective to rebuild versus replace. The utility can do a quick turnaround in repairing these units themselves in 2 days and for \$800 in material. Efficiency is restored and enhanced and will be maintained for longer than untreated pumps.

PICTURES

1. Pump casing after grit blasting
2. Deep pitting repaired with Belzona® 1311
3. First coat of Belzona® 1341N applied
4. Second coat applied to complete the application



1.



2.



3.



4.

For more examples of *Belzona Know-How In Action*, please visit <http://khia.belzona.com>



ISO 9001:2008
Q 09335
ISO 14001:2004
EMS 509612

Belzona products are
manufactured under an ISO
9000 Registered Quality
Management System.

UK • USA • Canada • China
www.belzona.com


BELZONA®
Repair • Protect • Improve