

## BELZONA PROTECTS NEWLY CONSTRUCTED CONTAINMENT AREA

### CUSTOMER

Petrochemical Plant, Canada

### APPLICATION DATE

October 2007

### APPLICATION SITUATION

Newly constructed containment area needed protection before installing tanks and other equipment.

### PROBLEM

Protective lining required to isolate concrete from minor and major chemical spills.

### PRODUCTS

Belzona® 4111 (Magma Quartz)

Belzona® 5811 (Immersion Grade)

### SUBSTRATE

1 year old concrete

### APPLICATION METHOD

Application carried out in accordance with Belzona Know-How System Leaflet TCC-15.

### BELZONA FACTS

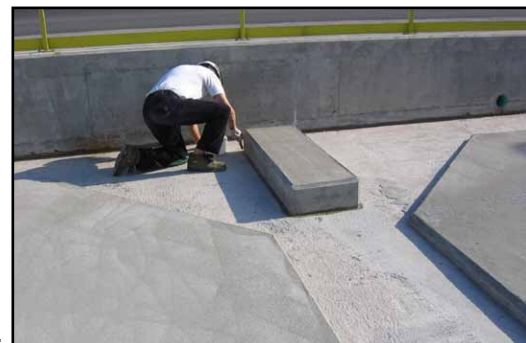
Belzona® 5811 provides excellent resistance to broad range of chemicals (Alums and Hydrochloric acid in this case). Use of beige and grey colors ensures good coverage and protection to the underlying concrete. Belzona® 4111 fillet provides additional security and potential problem areas such as the wall to floor joint.

### PICTURES

1. Surface preparation with high pressure wash
2. Application of Belzona® 4911 Conditioner
3. Application of Belzona® 4111 to create a fillet on wall/floor junctions.
4. Application of Belzona® 5811 (beige and grey colors used)



1.



2.



3.



4.

For more examples of *Belzona Know-How In Action*, please visit <http://khia.belzona.com>



ISO 9001:2008  
Q 09335  
ISO 14001:2004  
EMS 509612

Belzona products are  
manufactured under an ISO  
9000 Registered Quality  
Management System.

UK • USA • Canada • China  
[www.belzona.com](http://www.belzona.com)

  
**BELZONA®**  
Repair • Protect • Improve