

## BELZONA IMPROVES PUMP EFFICIENCY

### CUSTOMER

Washington, USA

### APPLICATION DATE

1993

### APPLICATION SITUATION

Multi-stage water pump.

### PROBLEM

The local water utility company wanted to coat new pumps to increase efficiency and protect against erosion-corrosion.

### PRODUCTS

Belzona 1341 (Supermetalglide)

### SUBSTRATE

Cast Iron

### APPLICATION METHOD

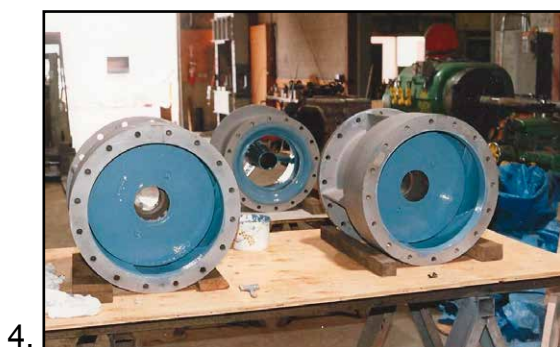
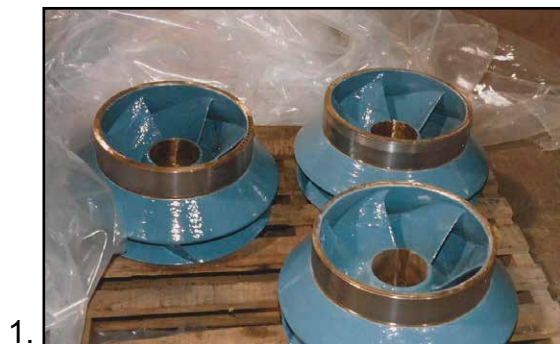
The pump casings and impellers were grit blasted and then two coats of Belzona 1341 were applied. The application was carried out in accordance with Belzona Know-How System Leaflets CEP-10.

### BELZONA FACTS

With a 7% increase in efficiency, the city can expect to see a full return of the coating cost in about 7 months. Since the pumps run in clean water, they can expect a service life of over 25 years.

### PICTURES

1. Completed application on impeller
2. Completed application on casing
3. Completed application on casing
4. View of completed application on water pumps



For more examples of *Belzona Know-How In Action*, please visit <http://khia.belzona.com>



ISO 9001:2008  
Q 09335  
ISO 14001:2004  
EMS 509612

Belzona products are  
manufactured under an ISO  
9000 Registered Quality  
Management System.

UK • USA • Canada • Thailand  
[www.belzona.com](http://www.belzona.com)

  
**BELZONA**  
Repair • Protect • Improve