

BELZONA SAVES WASTEWATER GRIT PUMP

CUSTOMER

Montana, USA

APPLICATION DATE

1986

APPLICATION SITUATION

Wastewater grit pump.

PROBLEM

This grit pump got extremely worn and had been rebuilt with an alternative method, which lasted only 3 months.

PRODUCTS

Belzona 1311 (Ceramic R-Metal)

Belzona 1811 (Ceramic Carbide)

Belzona 2111 (D & A Hi-Build Elastomer)

SUBSTRATE

Cast Iron

APPLICATION METHOD

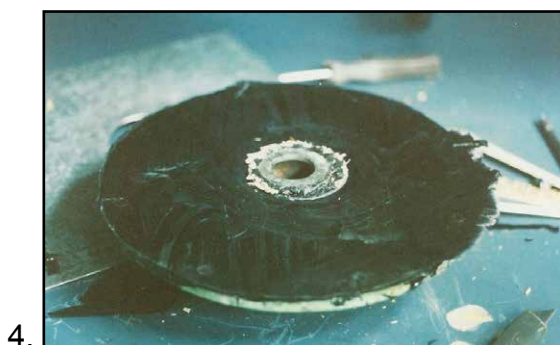
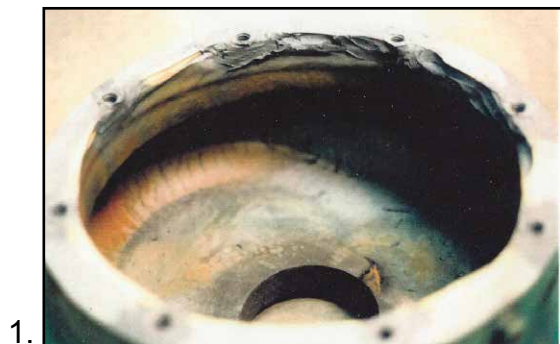
The application was carried out in accordance with Belzona Know-How System Leaflets CEP-3 & CEP-5. The threads that were worn through were rebuilt with Belzona 1311. The bowl was lined with Belzona 1811. The end cover was rebuilt with Belzona 2111 as a comparison to Belzona 1811.

BELZONA FACTS

A replacement pump was very expensive. The previous rebuild had washed out in three months. After Belzona's solution, the pump was opened for inspection 6 months later and found to be in perfect condition.

PICTURES

1. Pump bowl with threads rebuilt
2. Pump bowl coated with Belzona 1811
3. End cover showing wear
4. End cover with Belzona 2111 formed in place; excess needs to be trimmed



For more examples of *Belzona Know-How In Action*, please visit <http://khia.belzona.com>



Belzona products are manufactured under an ISO 9000 Registered Quality Management System.

UK • USA • Canada • Thailand
www.belzona.com


BELZONA
Repair • Protect • Improve