

LOADING DOCK DRAIN COATED WITH BELZONA

CUSTOMER

Mississauga, ON, Canada

APPLICATION DATE

September 2013

APPLICATION SITUATION

Loading dock drain.

PROBLEM

The existing coating had failed, causing blockage of the drain.

PRODUCTS

Belzona 5811 (Immersion Grade)

SUBSTRATE

Concrete

APPLICATION METHOD

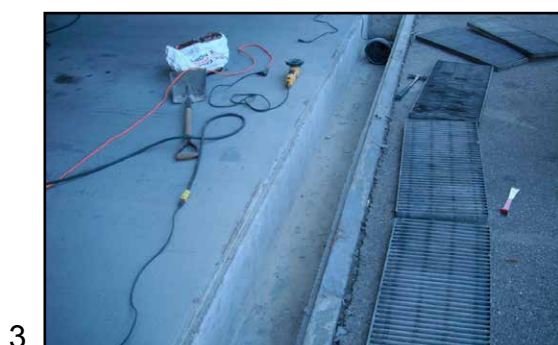
The application was carried out in accordance with Belzona Know-How System Leaflet FPA-3 for protecting floors and drains against chemical attack. The surface was prepared for application by removing the existing coating and cleaned with a high pressure washer. Belzona 5811 was applied as a two coat system with a short bristle brush.

BELZONA FACTS

Belzona 5811 is a brush or spray applied coating that has excellent chemical resistance and provides outstanding protection from the effects of salt water, acid, alkali, alcohol, hydrocarbon and the environment. This product can be applied to virtually any surface including cast iron, stainless steel, brass, copper, concrete, wood, fiberglass and aluminum.

PICTURES

1. Prior to application
2. Preparation in progress
3. Application in progress
4. Completed application



For more examples of *Belzona Know-How In Action*, please visit <http://khia.belzona.com>



ISO 9001:2008
Q 09335
ISO 14001:2004
EMS 509612

Belzona products are
manufactured under an ISO
9000 Registered Quality
Management System.

UK • USA • Canada • Thailand
www.belzona.com


BELZONA
Repair • Protect • Improve