

BELZONA REPAIR AND PROTECTION OF HYDRO PLANT DRAFT TUBE

CUSTOMER

Hydroelectric power station, north Sweden.

APPLICATION DATE

Sept. 2010

APPLICATION SITUATION

Hydroelectric power plant draft tube.

PROBLEM

Severe damage caused by cavitation in the upper part of the draft tube.

PRODUCTS

Belzona® 4111 (Magma Quartz)

Belzona® 1341 (Supermetalgilde)

SUBSTRATE

Concrete

APPLICATION METHOD

Application was carried out in accordance with Belzona Know-How System Leaflet CEP-10. After drying and preparing substrate Belzona® 4111 was used to rebuild damaged concrete before coating with Belzona® 1341.

BELZONA FACTS

When the job was inspected one year later, the customer was extremely satisfied with what he found and Belzona has become the standard repair solution for future repairs on draft tubes. A similar job was done in the autumn of 2011 and another job is planned for 2012.

PICTURES

1. The draft tube being repaired with Belzona® 4111
2. The repair area being coated with Belzona® 1341
3. The finished application
4. The application one year later



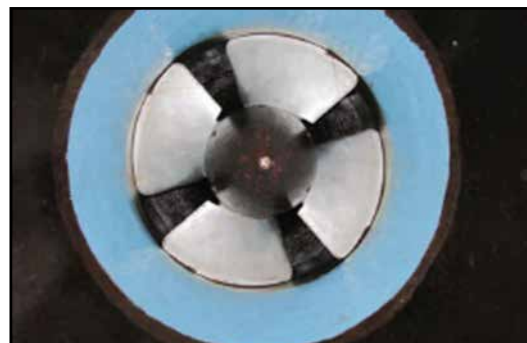
1.



2.



3.



4.

For more examples of *Belzona Know-How In Action*, please visit <http://khia.belzona.com>



ISO 9001:2008
Q 09335
ISO 14001:2004
EMS 509612

Belzona products are
manufactured under an ISO
9000 Registered Quality
Management System.

UK • USA • Canada • China
www.belzona.com


BELZONA®
Repair • Protect • Improve