

## BELZONA UPGRADES SPIRITS CONTAINMENT AREA

### CUSTOMER

Distillery, Scotland

### APPLICATION DATE

2011

### APPLICATION SITUATION

Spirit containment area

### PROBLEM

The existing protective system had failed. The chemical containment area could no longer be relied upon to prevent liquid loss into the groundwater/watercourse in the event of a spillage.

### PRODUCTS

Belzona® 4131 (Magma screed)

Belzona® 4141 (Magma Build)

Belzona® 5811 (Immersion Grade)

### SUBSTRATE

Concrete

### APPLICATION METHOD

Application was carried out in accordance with Belzona Know-How System Leaflet TCC-15. Belzona® 4131 and Belzona® 4141 were used to repair the degraded sections of the walls and to create fillets to all horizontal and vertical corners of the bund. The floor was screeded with Belzona® 4131 at 6mm to provide maximum impact resistance. A two coat system of Belzona® 5811 was then applied to all the internal surfaces of the bund.

### BELZONA FACTS

The Belzona system provides excellent resistance to permeation. The reinforcement of wall and floor joints will ensure long term containment without cracking or breaks in the bund lining.

### PICTURES

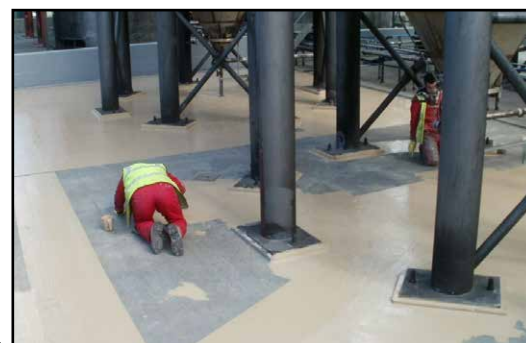
1. Containment area prior to Belzona Application
2. Concrete Repairs
3. Application of Belzona® 5811 underway
4. Completed Application



1.



2.



3.



4.

For more examples of *Belzona Know-How In Action*, please visit <http://khia.belzona.com>



ISO 9001:2008  
Q 09335  
ISO 14001:2004  
EMS 509612

Belzona products are  
manufactured under an ISO  
9000 Registered Quality  
Management System.

UK • USA • Canada • China  
[www.belzona.com](http://www.belzona.com)

**BELZONA®**  
Repair • Protect • Improve