

BELZONA OFFERS IMPROVED SAFETY IN CHEMICAL PLANT

CUSTOMER

Chemical Plant, UK

APPLICATION DATE

2010

APPLICATION SITUATION

Concrete damage on roads, bunds and plinths

PROBLEM

Over many years on this site, concrete surfaces had suffered attack from regular heavy lorry traffic, slab movement and from many chemicals. Concrete surfaces had been cracked or eroded in many areas around the plant, including access roads, pavements, expansion joints, bunds and plinths. Although some of these problems were structural, the main concern for the client was for the trip hazards around the site.

PRODUCTS

Belzona® 4131 (Magma Screed)

SUBSTRATE

Concrete

APPLICATION METHOD

Application was carried out in accordance with Belzona Know-How System Leaflet FPA-1.

BELZONA FACTS

The customer had previously tried conventional cementitious repairs which had not performed well and was looking for a lasting solution with a proven track record. For deep damage, the Belzona 4131 was bulk filled 50/50 with 6mm pea gravel and resin to reduce costs before topping with Belzona 4131. A total of 1700Kg of Belzona 4131 was used on site throughout the project. Following detailed inspections the client was delighted with the system and is considering its use on other sites with the same problems.

PICTURES

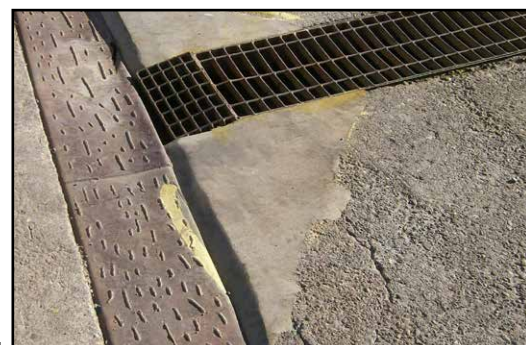
1. Example of typical concrete damage on road
2. Completed repair to road side
3. Completed repair to gulley covers
4. Completed rebuild of forklift ramp



1.



2.



3.



4.

For more examples of *Belzona Know-How In Action*, please visit <http://khia.belzona.com>



ISO 9001:2008
Q 09335
ISO 14001:2004
EMS 509612

Belzona products are
manufactured under an ISO
9000 Registered Quality
Management System.

UK • USA • Canada • China
www.belzona.com

