

## BELZONA UPGRADES SCHOOL POTWASH FLOOR

### CUSTOMER

College, Sussex, UK

### APPLICATION DATE

2012

### APPLICATION SITUATION

Potwash area of school kitchen.

### PROBLEM

The College required a protective coating for the washroom area in the kitchen. The coating should be able to withstand constant immersion in water and should incorporate slip resistance

### PRODUCTS

Belzona® 5811 (Immersion Grade)

### SUBSTRATE

Concrete

### APPLICATION METHOD

Application carried out in accordance with Belzona Know-How System Leaflets FPA-3 and FPA-8. The Belzona 9231 (Surefoot Aggregate) was cast onto the surface of the Belzona 5811 to create a non-slip surface.

### BELZONA FACTS

The existing floor coating had only been down 6 months and was failing; trapping dirt and grease and not being very hygienic. The Belzona solution was selected as it has proven track record, could easily withstand the activity of washing thousands of dishes a day and that it doesn't give off an odour once applied. Adding aggregate allowed a non slip surface to be created, ensuring safety of the staff on what would otherwise be a very slippery floor.

### PICTURES

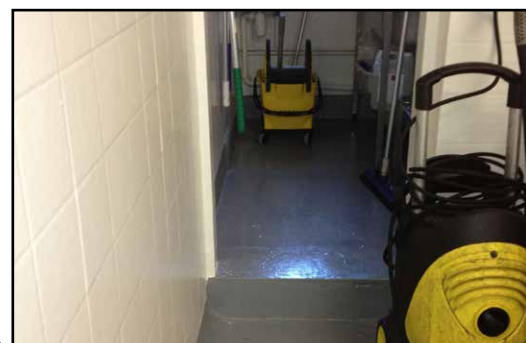
1. The pot wash floor before work commenced
2. After being cleaned and grit blasted
3. The pot wash floor after application
4. The loading/sorting area also coated



1.



2.



3.



4.

For more examples of *Belzona Know-How In Action*, please visit <http://khia.belzona.com>



ISO 9001:2008  
Q 09335  
ISO 14001:2004  
EMS 509612

Belzona products are  
manufactured under an ISO  
9000 Registered Quality  
Management System.

UK • USA • Canada • China  
[www.belzona.com](http://www.belzona.com)

  
**BELZONA®**  
Repair • Protect • Improve