

BELZONA BRINGS EXCAVATOR BACK TO SERVICE IN 1 DAY

CUSTOMER

Salt mine, Germany.

APPLICATION DATE

November 2009

APPLICATION SITUATION

Excavator shovel at salt mine

PROBLEM

The severe conditions of corrosion and abrasion in the mine caused loss of metal in the articulated coupling, which resulted in reduced service life of the component.

PRODUCTS

Belzona 1821 (Fluid Metal)

SUBSTRATE

Steel

APPLICATION METHOD

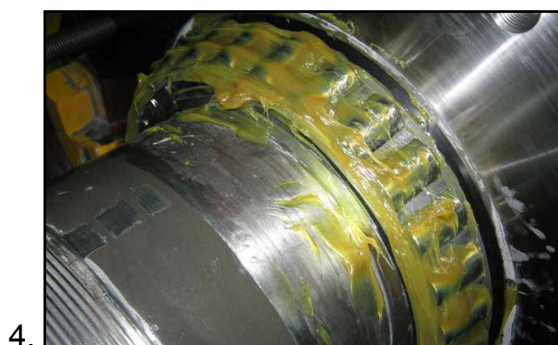
Application was carried out in accordance with Belzona Know-How System Leaflet MPT-2. Belzona 1821 was injected into former to create required shaft diameter.

BELZONA FACTS

The complete removal of the coupling for its replacement would have taken time and money, since the support plates would have needed to be stripped down. The Belzona moulding technique offered on site repair solution taking only 1 day to be completed. This significantly extended the service life of the coupling and allowed production to continue with minimal downtime.

PICTURES

1. Excavator shovel before the application
2. Injection of Belzona 1821
3. Final application
4. Bearing back to service



For more examples of *Belzona Know-How In Action*, please visit <http://khia.belzona.com>



Belzona products are manufactured under an ISO 9000 Registered Quality Management System.

UK • USA • Canada • Thailand
www.belzona.com

