

BELZONA REBUILDS PAPER MILL CYCLONE

CUSTOMER

Tacoma, WA, USA

APPLICATION DATE

August 2013

APPLICATION SITUATION

Internal lining repair of a cyclone that feeds a hog fuel boiler.

PROBLEM

Erosion had progressed over the years to a point of significant material loss and holes emerging as hog fuel is metered through the cyclone.

PRODUCTS

Belzona 1311 (Ceramic R-Metal)

Belzona 1321 (Ceramic S-Metal)

SUBSTRATE

Carbon steel

APPLICATION METHOD

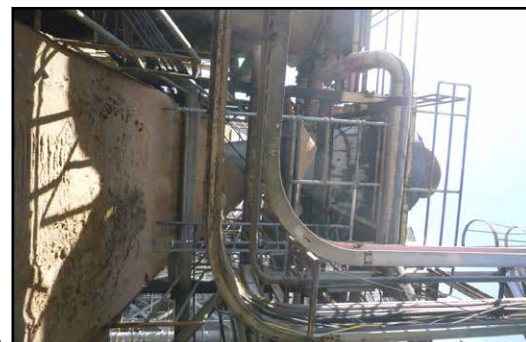
As usual, downtime was restricted and we had not been able to see interior surfaces prior to shutdown. Considerable pack rust was encountered, which required needle gunning prior to abrasive blasting. Belzona 1311 & 1321 were hand applied, as confined space offered no room for spray equipment use. Belzona 1311 was used to fill the voids and pits before a coat of Belzona 1321 was applied.

BELZONA FACTS

The client had an awareness of Belzona's quality materials and confidence to choose repairs over replacement of equipment, which would have been considerably more costly in both time and money.

PICTURES

1. Cyclone with lost material piled up around its base
2. Welded patches can be seen from outside
3. Pack rust and scale in the interior of the cyclone seen from below
4. Belzona 1311 applied as fillers and 1st coat of Belzona 1321 is applied



For more examples of *Belzona Know-How In Action*, please visit <http://khia.belzona.com>



ISO 9001:2008
Q 09335
ISO 14001:2004
EMS 509612

Belzona products are
manufactured under an ISO
9000 Registered Quality
Management System.

UK • USA • Canada • Thailand
www.belzona.com


BELZONA
Repair • Protect • Improve