

BELZONA PROTECTS WASTEWATER PUMP FROM EROSION-CORROSION

CUSTOMER

Wastewater Plant, Niagara Region, Ontario, Canada

APPLICATION DATE

September, 2013

APPLICATION SITUATION

Pumps in a regional Wastewater Authority.

PROBLEM

High levels of erosion-corrosion caused by entrained solids in wastewater media being pumped for processing.

PRODUCTS

Belzona 1321 (Ceramic S-Metal)

SUBSTRATE

Cast Steel

APPLICATION METHOD

Application was carried out by brush in accordance with Belzona Know-How System Leaflet CEP-03.

BELZONA FACTS

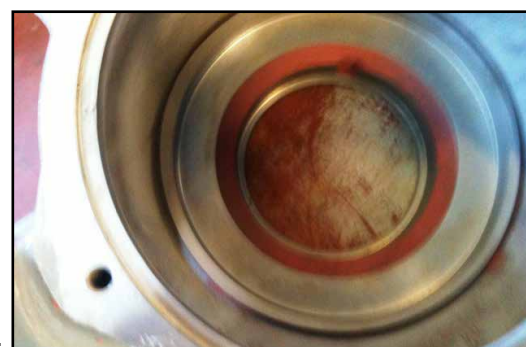
Regional waste water authority routinely replaces its pumps, as it has been unsuccessful with previous coatings to protect against erosion and corrosion of entrained solids through its waste pumping system. Coating will allow client to continue using more cost effective steel castings instead of looking at more exotic alloys. The easy application of the Belzona 1321 in two colors and two coat system allows the internal maintenance team to complete the repairs internally and observe the level wear before it becomes critical.

PICTURES

1. View of new cast steel pump volute
2. Prepared surface by abrasive blasting
3. First coat of Belzona 1321 (Grey) applied
4. Second coat of Belzona 1321 (Blue) applied



1.



2.



3.



4.

For more examples of *Belzona Know-How In Action*, please visit <http://khia.belzona.com>



ISO 9001:2008
Q 09335
ISO 14001:2004
EMS 509612

Belzona products are
manufactured under an ISO
9000 Registered Quality
Management System.

UK • USA • Canada • Thailand
www.belzona.com


BELZONA
Repair • Protect • Improve