

BELZONA FIXES A CRACKED CUTWATER ON A FAN PUMP

CUSTOMER

Southeast Washington, USA

APPLICATION DATE

June 2015

APPLICATION SITUATION

Cracked casting seam on a fan pump at a paper mill.

PROBLEM

Casting seam on the cut water of this Gould pump had separated and was beginning to erode from being in use.

PRODUCTS

Belzona 1311 (Ceramic R-Metal)

Belzona 9341 (Reinforcement Sheet)

SUBSTRATE

Cast iron

APPLICATION METHOD

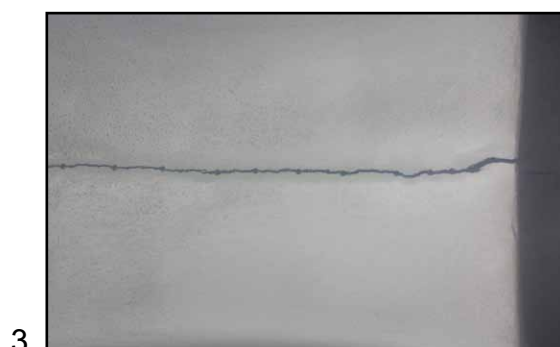
The application was carried out in accordance with Belzona Know-How System Leaflet CEP-6. First, the application area (front and back) and the area inside the crack was grit blasted to remove all of the contaminants. Pilot holes were drilled every 1" to 1.5", and the holes were tapped. Then, set screws were inserted with a coating of Belzona 1311. The crack was V'd out on the face. Then, the first layer of Belzona 1311 was applied, pushing it into and through the crack. A one coated layer of Belzona 9341 was applied. Then, a final coat of Belzona 1311 was applied and smoothed off front and back. After it had cured, an orbital sander was used to smooth it down to ensure a blended surface.

BELZONA FACTS

The alternatives to repairing this pump included a) welding on-site and risk causing more damage from heat stress, b) sending out for manufacturers repair which would result in at least 2 weeks of downtime, c) replacing the pump which would cost up to \$120,000.00 USD, or d) nothing. The Belzona 1311 repair used \$150.00 USD of material.

PICTURES

1. View of pump
2. Grit blasted surface
3. Holes drilled
4. Completed application



For more examples of *Belzona Know-How In Action*, please visit <http://khia.belzona.com>



Belzona products are manufactured under an ISO 9000 Registered Quality Management System.

UK • USA • Canada • Thailand
www.belzona.com

