

BELZONA REPAIRS FLANGE OF OFFSHORE PLATFORM

CUSTOMER

Gulf of Mexico, USA

APPLICATION DATE

August 2015

APPLICATION SITUATION

An offshore platform was experiencing a leak in a nozzle flanged connection on a Deaerator Tower. The corrosion was related to high concentration of an oxygen scavenger chemical.

PROBLEM

The customer was not aware of this simple Belzona solution to his problem. The traditional solution was to cut and weld a new flange or weld overlay and field machining, which would have led to costly downtime. These methods would have also damaged the vessel's existing lining.

PRODUCTS

Belzona 1111 (Super Metal)
Belzona 9411 (Release Agent)
Belzona 9111 (Cleaner Degreaser)

SUBSTRATE

Carbon Steel

APPLICATION METHOD

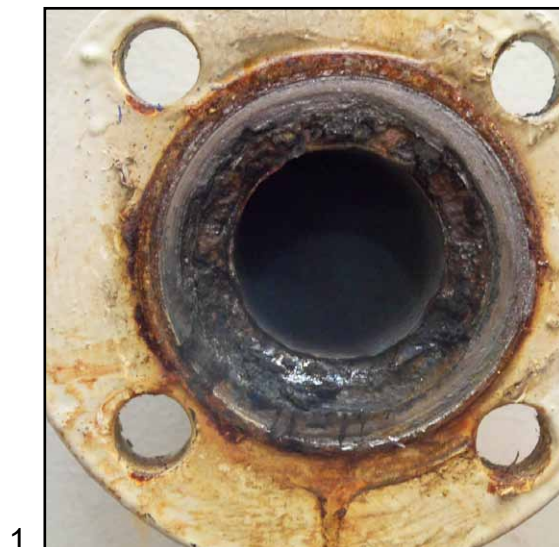
This flange face forming repair was conducted in accordance with Belzona Know-How System Leaflet VPF-17 for forming raised flange faces with Belzona flange face forming kit. The former was prepared and treated with two coats of Belzona 9411 for further releasing purposes. The damaged face was manually prepared and cleaned with Belzona 9111. Belzona 1111 was chosen as the rebuilding material and applied onto both the former and the damaged flange face. Both surfaces were brought together, levelled, and Belzona 1111 was allowed to cure. Upon completion of the curing time, the former was dismantled and the repair was visually inspected for any sharp edges, dips, or raises. The application was completed.

BELZONA FACTS

The customer chose Belzona because it does not require welding or cutting, ensures a good sealing surface, provides resistance to the chemicals in the process, and is easy to apply.

PICTURES

1. Original condition
2. Ready for bolting together
3. Flange former in place
4. Completed application



For more examples of *Belzona Know-How In Action*, please visit <http://khia.belzona.com>



Belzona products are manufactured under an ISO 9000 Registered Quality Management System.

UK • USA • Canada • Thailand
www.belzona.com

BELZONA
Repair • Protect • Improve