

BELZONA REPAIRS AND PROTECTS TURBINE ROTOR

CUSTOMER

Hydroelectric Power Plant, Brazil

APPLICATION DATE

September 2011

APPLICATION SITUATION

Turbine rotor.

PROBLEM

Wear caused by the effects of erosion and cavitation to the rotor with a waterfall height of 110 meters.

PRODUCTS

Belzona 1311 (Ceramic R-Metal)

Belzona 2141 (ARC-Fluid Elastomer)

Belzona 2941 (Elastomer SP-Conditioner)

SUBSTRATE

Stainless steel

APPLICATION METHOD

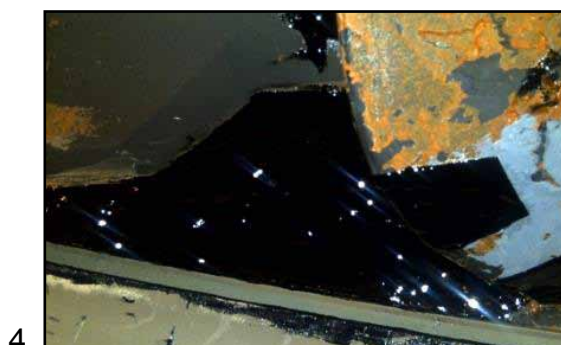
The application was carried out in accordance with Belzona Know-How System Leaflet CEP-1. The surface was prepared according to the standard NACE 2 (equivalent to SA 2 1/2) with dry abrasive blast to near white metal. Belzona 1311 was applied to smooth the wear on the vanes (holes and loss of thickness) and then, Belzona 2141 was partially applied in certain areas of the rotor. Subsequently, Belzona 2141 was applied in 2 coats.

BELZONA FACTS

Belzona attended to the customer's expectation, recovering and protecting the surface of the rotor with a long-lasting solution.

PICTURES

1. Worn area of the rotor
2. Defining the application area
3. Application under progress
4. Completed application



For more examples of *Belzona Know-How In Action*, please visit <http://khia.belzona.com>



ISO 9001:2008
Q 09335
ISO 14001:2004
EMS 509612

Belzona products are
manufactured under an ISO
9000 Registered Quality
Management System.

UK • USA • Canada • Thailand
www.belzona.com


BELZONA
Repair • Protect • Improve