

REPAIR & PROTECTION OF CHILLER WITH BELZONA

CUSTOMER

Office Building, Jakarta, Indonesia

APPLICATION DATE

January, 2015

APPLICATION SITUATION

End Cover and Tube Sheet of Trane Chiller from an office building Air Conditioning Unit

PROBLEM

Water side chiller components were suffering from erosion and corrosion damage.

PRODUCTS

Belzona 1311 (Ceramic R-Metal)

Belzona 1321 (Ceramic S-Metal)

SUBSTRATE

Cast iron

APPLICATION METHOD

Application was carried out in accordance with Belzona Know How System Leaflets HEX-1, HEX-2 and HEX-3.

BELZONA FACTS

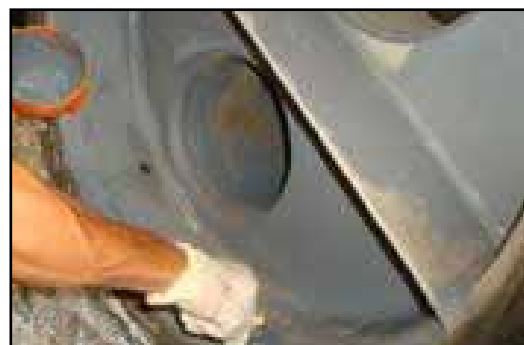
The Belzona System is a proven corrosion barrier system and will provide an effective solution to protect the Chiller for the life of the equipment.

PICTURES

1. Corroded area on Tube Sheet surface
2. Belzona 1321 being applied to chiller end cover
3. Pitted surface of tube sheet being rebuilt with Belzona 1321
4. Removing excess Belzona 1321 after applying two coats to the tube sheet.



1.



2.



3.



4.

For more examples of *Belzona Know-How In Action*, please visit <http://khia.belzona.com>



Belzona products are manufactured under an ISO 9000 Registered Quality Management System.

UK • USA • Canada • Thailand
www.belzona.com

