

BELZONA REPAIRS A SCREW PUMP

CUSTOMER

Leningradsky District, Russia

APPLICATION DATE

October 2010

APPLICATION SITUATION

Screw pump at a pulp and paper plant.

PROBLEM

After more than 20 years in service, a 10 mm wide isolation joint between the gutter and screw extended to 20-30 mm due to concrete wearing out, which has led to a significant efficiency loss of the pump.

PRODUCTS

Belzona 4111 (Magma-Quartz)

Belzona 4911 (Magma TX Conditioner)

Belzona 5811 (Immersion Grade)

SUBSTRATE

Concrete

APPLICATION METHOD

Gutter walls and sump were cleaned using high pressure equipment. Old concrete was removed from the gutter using a pneumatic tool. After the surface preparation, Belzona 4111 was applied on the gutter to restore the geometry of the surface. Belzona barrier coating was then applied on the gutter walls to provide chemical resistance.

BELZONA FACTS

The repair was carried out with no disruption to the production, which was crucial for the client due to cost implications. Due to the complexity of the application, competitors offered to complete the repair in 2 to 3 months' time as only two screw pumps were holding all the gutters at the plant and sewage treatment facilities were operating with no reserves. As a result of comprehensive maintenance experience and technical capabilities of the products, Belzona completed this repair in just 3 weeks, saving time and costs associated with work for the client.

PICTURES

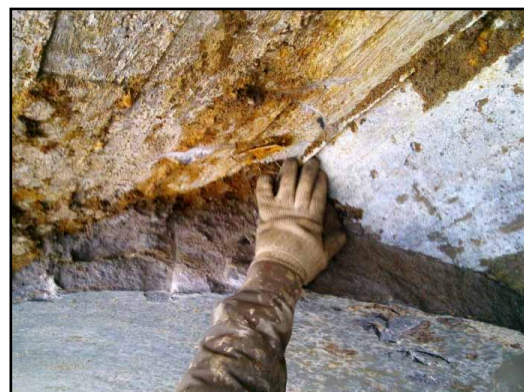
1. General view of two screw pumps
2. Cleaning of the gutter using high pressure equipment in progress
3. The depth of the applied material shown
4. Application of Belzona 5811



1.



2.



3.



4.

For more examples of *Belzona Know-How In Action*, please visit <http://khia.belzona.com>



ISO 9001:2008
Q 09335
ISO 14001:2004
EMS 509612

Belzona products are
manufactured under an ISO
9000 Registered Quality
Management System.

UK • USA • Canada • Thailand
www.belzona.com


BELZONA
Repair • Protect • Improve