

BELZONA SOLVES CORROSION ISSUE ON SHEET EDGE ROOFING SECTIONS

CUSTOMER

Leisure Center, Fleetwood, England, UK

APPLICATION DATE

2016

APPLICATION SITUATION

Large metal roof covering local leisure center.

PROBLEM

The area is close to the coast making corrosion of metal a real problem on exposed areas of mild steel. This large metal roof was suffering significant sheet edge corrosion damage.

PRODUCTS

Belzona 3131 (WG Membrane)

SUBSTRATE

Steel

APPLICATION METHOD

The application was carried out in accordance with Belzona Know-How System Leaflet RPA-1.

BELZONA FACTS

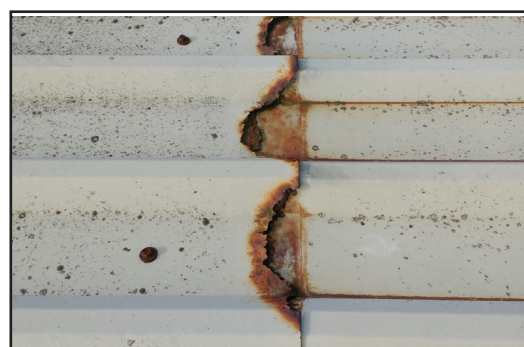
The Customer required a quick and cost effective long term solution to the serious corrosion on the sheet ends. Failure to resolve the issue quickly would have lead to increased rates of corrosion and ultimately, failure to protect from water ingress. This would not only have been damaging to the infrastructure of the building but could have also lead to slip risks on wet areas of floor inside.

PICTURES

1. Overview of roof area affected by sheet edge corrosion.
2. Close of of a badly damaged area.
3. Close up of a repaired area.
4. Overview of repaired roof area.



1.



2.



3.



4.

For more examples of *Belzona Know-How In Action*, please visit <http://khia.belzona.com>



ISO 9001:2008
Q 09335
ISO 14001:2004
EMS 509612

Belzona products are
manufactured under an ISO
9000 Registered Quality
Management System.

UK • USA • Canada • Thailand
www.belzona.com


BELZONA
Repair • Protect • Improve