

HISTORICAL STEEL STAIRCASE RENEWED WITH BELZONA

CUSTOMER

Kansas City, MO

APPLICATION DATE

October 2016

APPLICATION SITUATION

The original steel staircase on a historical building in downtown Kansas City was brought back to life with Belzona.

PROBLEM

The original 1940's steel staircase at the future home of the Kansas City Museum was in much need of repair or replacement.

PRODUCTS

Belzona 5231 (SG Laminate)

Belzona 1221 (Super E-Metal)

Belzona 5233

SUBSTRATE

Steel

APPLICATION METHOD

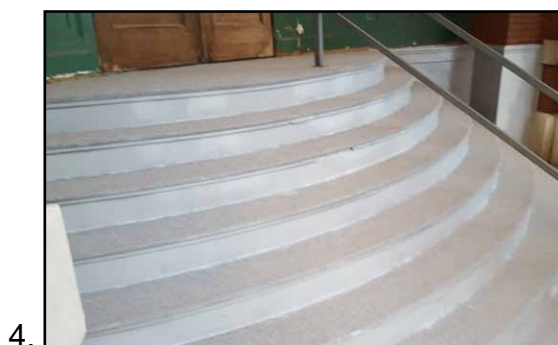
The entire staircase was blasted to near white metal. Belzona 1221 was used to anchor in a steel nosing. Belzona 5231 was used as the base coat on all surfaces and an anti-slip aggregate was broadcasted on all foot path areas. A final top coat of UV stable Belzona 5233 was then installed on all surfaces.

BELZONA FACTS

Replacing the stair with a similar kind was in excess of \$50,000 and the Belzona application was less than \$10,000.

PICTURES

1. Before/previous condition
2. After media blasting
3. After rebuilding the step nosings with Belzona 1221
4. Finished with anti-slip aggregate installed



For more examples of *Belzona Know-How In Action*, please visit <http://khia.belzona.com>



ISO 9001:2008
Q 09335
ISO 14001:2004
EMS 509612

Belzona products are
manufactured under an ISO
9000 Registered Quality
Management System.

UK • USA • Canada • Thailand
www.belzona.com


BELZONA
Repair • Protect • Improve