

BELZONA RESTORES CENTURY OLD SHIP

CUSTOMER

Dry Dock, Belfast, Ireland

APPLICATION DATE

October 2016

APPLICATION SITUATION

HMS Caroline, a ship owned by the National Museum of the Royal Navy, was undergoing a hull refurbishment in dry dock at Harland and Wolff in Belfast.

PROBLEM

Numerous compartments, fuel tanks and storage areas below the waterline had been taking on water. Welding was limited to areas of the hull that had no leaks, and that were robust enough to withstand hot works. The client was looking for a long-term repair solution, capable of bonding to a poor substrate and with rapid cure times as the dry dock was already booked for another ship repair.

PRODUCTS

Belzona 1111 (Super Metal)

Belzona 1212

SUBSTRATE

Steel

APPLICATION METHOD

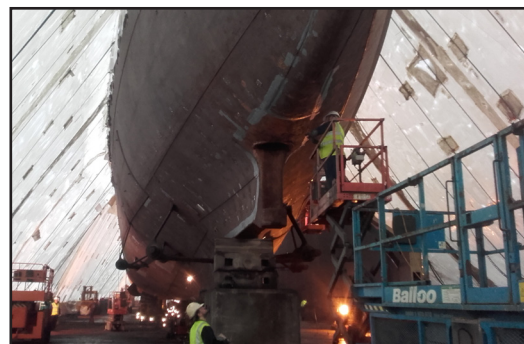
The application was carried out in accordance with Belzona System Leaflet SOS-1. Due to the size of the project and the short working window, a team of Mixers, Runners and Applicators were utilised. Belzona 1111 was firstly used to fill in badly corroded areas. The poor substrate condition in some areas required a surface-tolerant solution, therefore, Belzona 1212 was used in these.

BELZONA FACTS

Belzona was the only fast and effective solution to the problem as welding was limited. Once completed, HMS Caroline was returned to her home of Alexandra Dock in the Titanic Quarter in Belfast and now serves as a floating Naval Museum.

PICTURES

1. HMS Caroline in dry dock
2. Hull in need of leak sealing
3. Cold-applied, fast-curing solution administered
4. Hull after repairs and coating



1.



2.



3.



4.

For more examples of *Belzona Know-How In Action*, please visit <http://khia.belzona.com>



ISO 9001:2008
Q 09335
ISO 14001:2004
EMS 509612

Belzona products are
manufactured under an ISO
9000 Registered Quality
Management System.

UK • USA • Canada • Thailand
www.belzona.com


BELZONA
Repair • Protect • Improve