

BELZONA PROVIDES THE SOLUTION TO A PUMP PROBLEM

CUSTOMER

Lake Stevens, WA, USA

APPLICATION DATE

May 2016

APPLICATION SITUATION

Wastewater pump.

PROBLEM

The pump had a 1/4" hole appear on the outside of the volute, allowing for wastewater to leak during operation. After opening the pump, it was discovered that there was fairly extensive damage in four locations as well as damage to the cutwater and erosion in the throat and on the flange face.

PRODUCTS

Belzona 1111 (Super Metal)

Belzona 1321 (Ceramic S-Metal)

SUBSTRATE

Cast Iron

APPLICATION METHOD

The customer purchased a grit blasting cabinet for this project to ensure proper surface preparation. After grit blasting, more surface damage was discovered in the throat of the pump and the flange face. Belzona 1111 was used to fill in the damage, patch the hole and smooth over the pitted surface and damaged flange face. As soon as Belzona 1111 was firm, Belzona 1321 was applied in the usual 2-coat/2-color system as recommended. The application was done with a modified version of CEP-6.

BELZONA FACTS

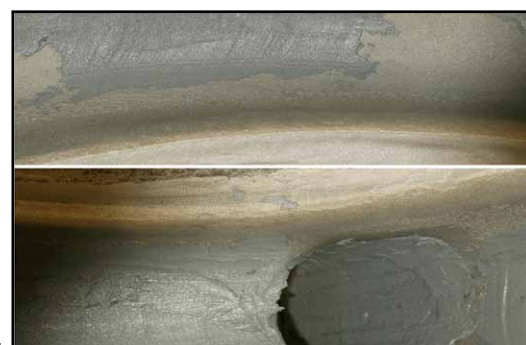
The repairs on this used 3 cubic inches of Belzona 1111 and 1 kg total of Belzona 1321, making the actual product used cost less than \$350.00 USD. With a replacement in the \$4000.00 USD range, this was an easy way to save revenue and extend the life of their assets.

PICTURES

1. Top: Hole in the volute / Bottom: Damage to cutwater.
2. Top: Hole in volute repaired / Bottom: Damage to cutwater repaired with 1111.
3. Flange face damage / Flange face damage repaired.
4. Completed application with 1321 overcoat.



1.



2.



3.



4.

For more examples of *Belzona Know-How In Action*, please visit <http://khia.belzona.com>



Belzona products are manufactured under an ISO 9000 Registered Quality Management System.

UK • USA • Canada • Thailand
www.belzona.com

