

BELZONA REFURBISHES ENTRANCE STEPS OUTSIDE A MUNICIPAL BUILDING

CUSTOMER
BC, Canada

APPLICATION DATE
May 2017

APPLICATION SITUATION
Entrance steps

PROBLEM
The entrance steps were looking "tired" and needed to be repaired and re-coated.

PRODUCTS
Belzona 4111 (Magma Quartz)
Belzona 5231 (SG Laminate)
Belzona 9232 (Aggregate)
Belzona 5233

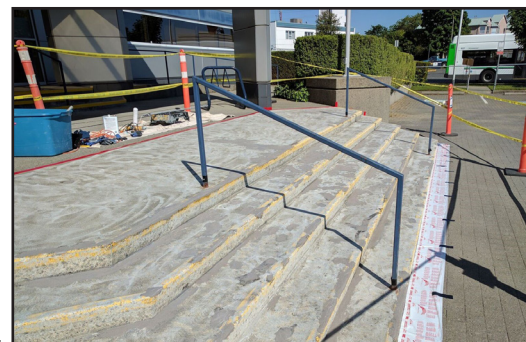
SUBSTRATE
Concrete

APPLICATION METHOD
The application was carried out in accordance with Belzona Know-How System Leaflet FPA-1. The original coating was removed using a Vacu-Grinder and the damaged areas rebuilt with Belzona® 4111. A full coat of Belzona® 5231 in Light Grey was applied to the prepared surface and saturated with Belzona® 9232 and over-coated with Belzona 5233 in Grey. All stair tread edges were highlighted with safety yellow.

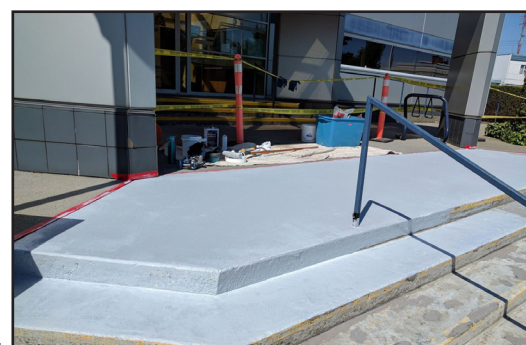
BELZONA FACTS
This municipality trusted Belzona based on the previous successes.

PICTURES

1. The original coating removed
2. A full coat of Belzona 5231 in Light Grey applied to the prepared surface, saturated with Belzona 9232 and over-coated with Belzona 5233.
3. All stair tread edges were highlighted with safety yellow.
4. Close up of completed stair surface.



1.



2.



3.



4.

For more examples of *Belzona Know-How In Action*, please visit <http://khia.belzona.com>



ISO 9001:2008
Q 09335
ISO 14001:2004
EMS 509612

Belzona products are
manufactured under an ISO
9000 Registered Quality
Management System.

UK • USA • Canada • Thailand
www.belzona.com

BELZONA
Repair • Protect • Improve