

BELZONA REPAIRS DAMAGED FLOOR IN A WAREHOUSE

CUSTOMER

Cement plant in Croatia

APPLICATION DATE

February 2014

APPLICATION SITUATION

Concrete floor of a warehouse in a cement plant was damaged due to heavy traffic of forklifts and trucks, as well as storage of palettes with cement over time. The damage was situated on joint areas of large concrete plates (3m x 5m) of the floor.

PROBLEM

Forklifts carrying palettes with bags of cement, as well as customers' trucks that come into the warehouse for loading, suffered damages to wheels and tires when passing over damaged area.

PRODUCTS

Belzona 4911 (TX Conditioner) Belzona 4111 (Magma Quartz) Belzona 4521 (Magmaflex Fluid)

SUBSTRATE

Concrete.

APPLICATION METHOD

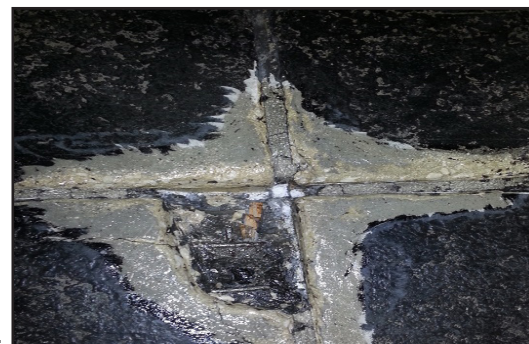
The application was carried out in accordance with Belzona Know-How System Leaflet FPA-1 and FPA-6.

BELZONA FACTS

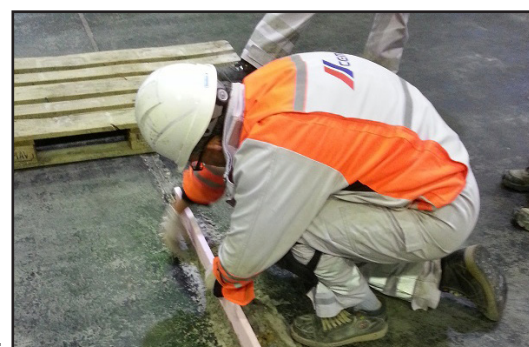
Because of continuous 24/7 production, the warehouse must be in use all the time and only small portion of it could be out of use. According to customer, Belzona offered the best value for money, allowing the customer's staff to do repairs themselves in periods with less activity in the warehouse. Site revisited after 1 year shows that repaired area is still in perfect shape.

PICTURES

1. A damaged concrete floor in a warehouse.
2. Damaged area rebuilt with Belzona 4111.
3. Sealing expansion joints with Belzona 4521.
4. Situation after 1 year.



1.



2.



3.



4.

For more examples of *Belzona Know-How In Action*, please visit <http://khia.belzona.com>



Belzona products are manufactured under an ISO 9000 Registered Quality Management System.

UK • USA • Canada • Thailand
www.belzona.com

