

BELZONA GIVES A NEW LIFE TO A PAPER MILL PUMP

CUSTOMER

Florida, USA

APPLICATION DATE

June 2017

APPLICATION SITUATION

An old pump at a paper mill plant.

PROBLEM

The interior of the pump metal was severely pitted and the efficiency was compromised. This pump was slated to be scrapped because it was in a bad shape. The replacement pump did not arrive in time so the decision was made to try to salvage this pump using Belzona.

PRODUCTS

Belzona 1311 (Ceramic R-Metal)

Belzona 1321 (Ceramic S-Metal)

SUBSTRATE

Cast Iron

APPLICATION METHOD

Substrate was grit blasted with Black Beauty and then following the Manufacturer's Instructions for Use, a Belzona applicator was used to apply Belzona 1311 to rebuild and smooth out the damaged metal substrate. Belzona 1321 was then applied by a stiff bristle brush in two coats. The application was carried out in accordance with Belzona System Leaflets CEP-3 and CEP-5.

BELZONA FACTS

This paper mill had used Belzona to preserve other pumps and chose Belzona to try to save this one.

PICTURES

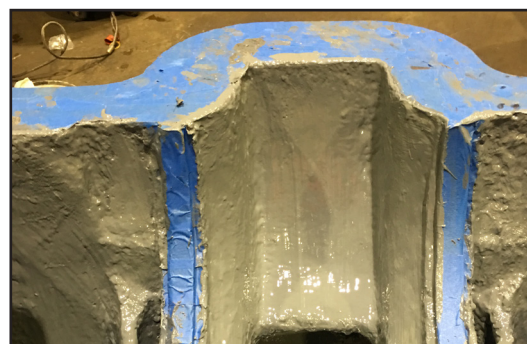
1. Pitting and degradation of the pump after it was blasted with Black Beauty.
2. Before the product application.
3. The metal rebuilt and coated.
4. Two coats of Belzona 1321 applied over Belzona 1311.



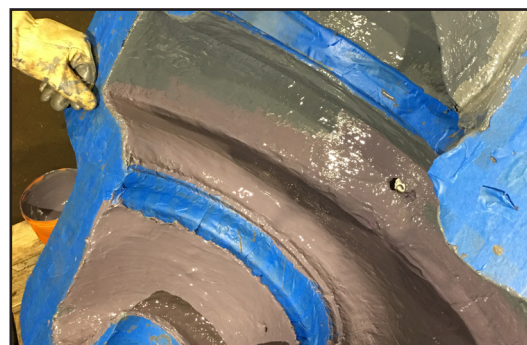
1.



2.



3.



4.

For more examples of *Belzona Know-How In Action*, please visit <http://khia.belzona.com>



ISO 9001:2008
Q 09335
ISO 14001:2004
EMS 509612

Belzona products are
manufactured under an ISO
9000 Registered Quality
Management System.

UK • USA • Canada • Thailand
www.belzona.com


BELZONA
Repair • Protect • Improve