

BELZONA RE-COATS A LARGE GOULDS PUMP IN A PAPER MILL

CUSTOMER

Florida, USA

APPLICATION DATE

May, 2017

APPLICATION SITUATION

A large Goulds Split Case Pump that has worked 24/7 in a paper mill for many years.

PROBLEM

The pump had been coated from the beginning of its service life with Belzona. Every few years it needed to be recoated due to the harsh work environment.

PRODUCTS

Belzona 1311 (Ceramic R-Metal)

Belzona 1321 (Ceramic S-Metal)

SUBSTRATE

Cast Iron

APPLICATION METHOD

Old coating was blasted off with Black Beauty to reach the cleanliness profile required by Belzona. Belzona 1311 was applied to smooth out all rough areas. Two coats of Belzona 1321 were applied with brushes. The application was carried out in accordance with CEP-3 and CEP-5 Belzona System Leaflets.

BELZONA FACTS

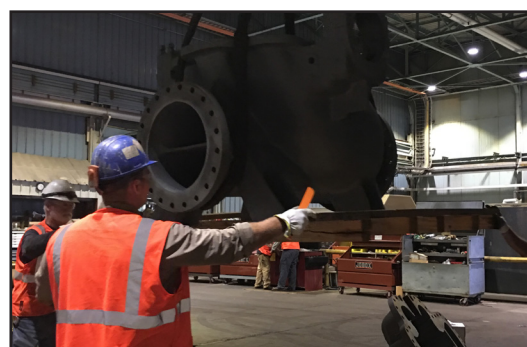
This paper mill always coats pumps, old and new, with Belzona because it has had such good luck with longevity of their pumps using this method.

PICTURES

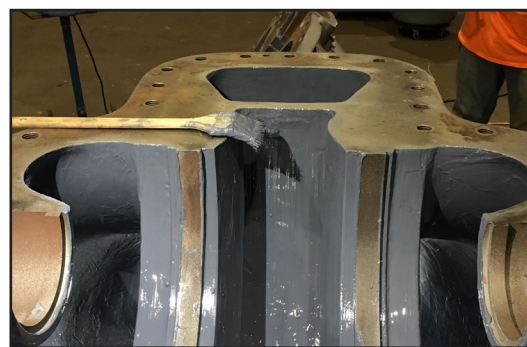
1. Blasting out in the on-house contractor's blast yard.
2. Bringing in the pump with an overhead crane.
3. Application complete.
4. Application complete.



1.



2.



3.



4.

For more examples of *Belzona Know-How In Action*, please visit <http://khia.belzona.com>



ISO 9001:2008
Q 09335
ISO 14001:2004
EMS 509612

Belzona products are
manufactured under an ISO
9000 Registered Quality
Management System.

UK • USA • Canada • Thailand
www.belzona.com


BELZONA
Repair • Protect • Improve