

BELZONA 1321 IN USE AT A LARGE SAWMILL IN THE BALTICS

CUSTOMER

Estonia

APPLICATION DATE

2018

APPLICATION SITUATION

Grip Rollers in Lumber Mill were worn causing inefficient transfer of lumber system.

PROBLEM

Worn lumber transfer rollers lack the required grip to transfer lumber quickly and efficiently. This inefficiency affected the ability of transferring lumber from one part of the plant to another, which was affecting revenue and production levels.

PRODUCTS

Belzona 1321 (Ceramic S- Metal)

Belzona 9211 (Supergrip Aggregate)

SUBSTRATE

Mild steel

APPLICATION METHOD

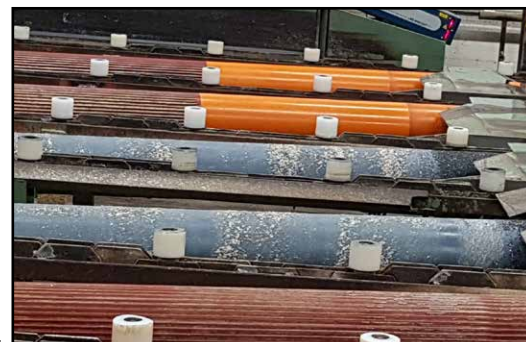
The application was carried out in accordance with Belzona Know-How System Leaflet SHM-12

BELZONA FACTS

These rolls are typically in service 1-2 years depending on the sawmill activity and type of lumber produced

PICTURES

1. Rolls grip system worn smooth
2. Application of Belzona 1321 and Belzona 9211



For more examples of *Belzona Know-How In Action*, please visit <http://khia.belzona.com>

Belzona products are
manufactured under an ISO
9000 Registered Quality
Management System.

UK • USA • Canada • Thailand
www.belzona.com

Copyright © Belzona International Limited 2019


BELZONA®
Repair • Protect • Improve