

## STEEL PLATE BONDING WITH BELZONA 1511 FOR BRIDGE

### CUSTOMER

Rama IX Bridge, Bangkok, Thailand

### APPLICATION DATE

42325

### APPLICATION SITUATION

Steel deck of Rama IX Bridge was cracked.

### PROBLEM

Steel deck was cracked which was not able to weld as the bridge moves all the time and hot welding can cause distortion of steel deck and further damage.

### PRODUCTS

Belzona 1511 (Super HT-Metal)

### SUBSTRATE

Steel

### APPLICATION METHOD

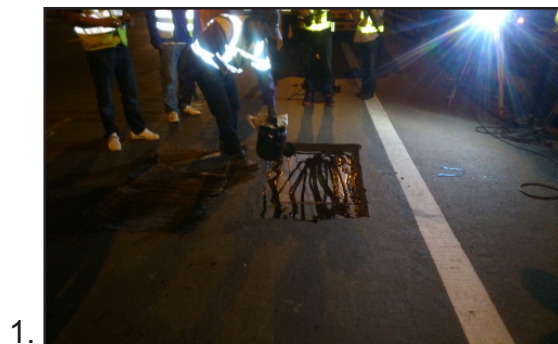
Drill a hole on the steel plate and tap in the screw to tighten the hook screw. The repair area was prepared with grit blasting and remove oil, grease, and contamination with MEK. And then, mix Belzona 1511 and apply it on the repair area and on the prepared area of steel plate, place plate on the repair area and leave cure. After that cut the hook screw and fill the asphalt to achieve the existing level.

### BELZONA FACTS

Belzona cold bonding was tested and used to avoid hot welding to crack or corroded steel deck.

### PICTURES

1. Belzona 1511 was applied on the repair area and on the prepared area of steel plate.
2. and 3 Place the steel plate on the repair area.



For more examples of *Belzona Know-How In Action*, please visit <http://khia.belzona.com>

Belzona products are  
manufactured under an ISO  
9000 Registered Quality  
Management System.

[www.belzona.com](http://www.belzona.com)

Copyright © Belzona International Limited 2021

  
**BELZONA®**  
Repair • Protect • Improve