

BELZONA REPAIRS AND PROTECTS CENTRIFUGAL PUMP

CUSTOMER

Pune Rural, India

APPLICATION DATE

Oct-18

APPLICATION SITUATION

Centrifugal Pump casing and discharge mouth at a sugar plant in Pune Region

PROBLEM

Feed water at max. 45 deg C was pumped through these pumps for the sugar processing plant. Due to design fault, there was lot of turbulence at discharge which resulted in heavy erosion and corrosion of discharge mouth. They had to replace that part every year. The customer needed a solution that could extend the life as well as be within their budget.

PRODUCTS

Belzona 1111 Super Metal and Belzona 5821

SUBSTRATE

Steel

APPLICATION METHOD

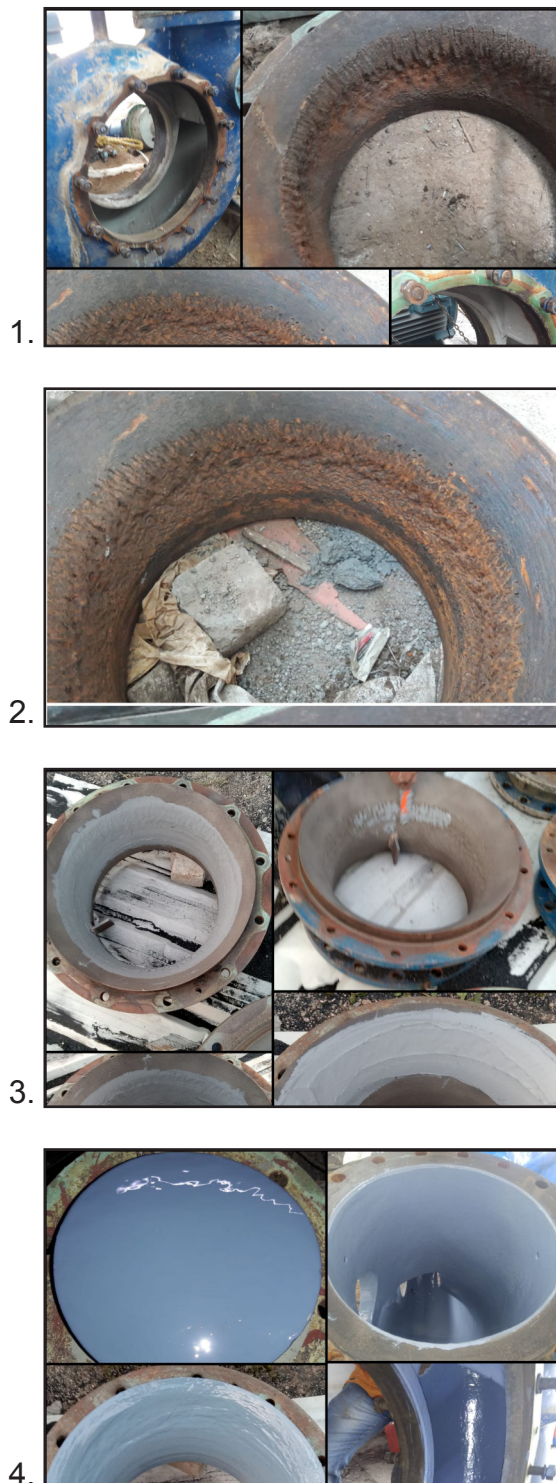
Grit blasting done to prepare the surface to 75 micron profile and SA 2.5 cleanliness. Belzona 1111 used to rebuild the surface. Two coats of Belzona 5821 applied to the pump.

BELZONA FACTS

SOP demands use of Belzona 1321 Ceramic S-Metal as the protection coating as it provides a good erosion corrosion resistance. However, client budget was limited, and Cost of application with Belzona 1321 was making it difficult for finalizing the project. Newly launched Belzona 5821 was projected as solution and it performed well over last 2 seasons of Sugar crushing. The cost of application was half of that with Belzona 1321 Ceramic S-Metal.

PICTURES

1. Pumps at the time of inspection
2. High erosion on mouth
3. Metal rebuilding done with Belzona 1111
4. Coating completed



For more examples of *Belzona Know-How In Action*, please visit <http://khia.belzona.com>

Belzona products are
manufactured under an ISO
9000 Registered Quality
Management System.

www.belzona.com

Copyright © Belzona International Limited 2021


BELZONA
Repair • Protect • Improve