

BELZONA PUMP DIFFUSER PROTECTED

CUSTOMER

Sewage Treatment Plant in Northern California

APPLICATION DATE

September 1982

APPLICATION SITUATION

Centrifugal pump diffuser

PROBLEM

Erosion/corrosion and cavitation

PRODUCTS

Belzona® 1311 (Ceramic R Metal)

Belzona® 1321 (Ceramic S Metal)

SUBSTRATE

Cast iron

APPLICATION METHOD

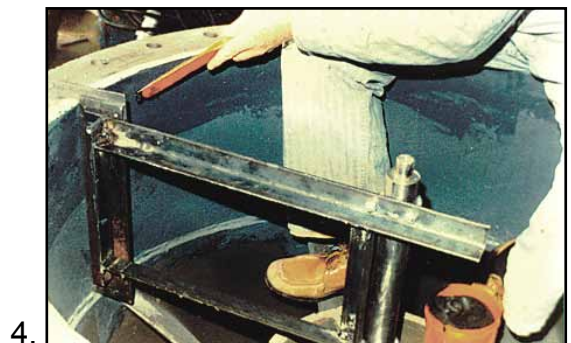
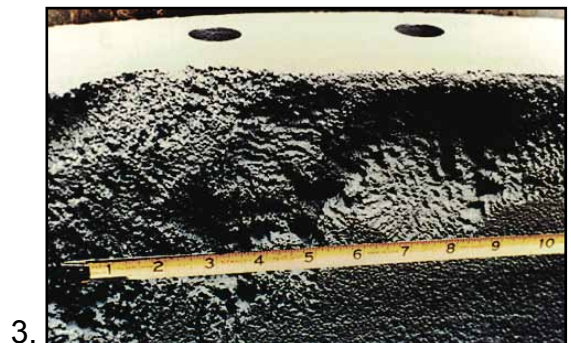
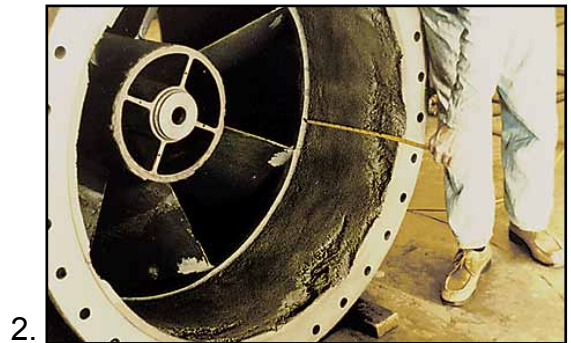
The application was carried out in accordance with Belzona Know-How System Leaflets CEP-1 and CEP-2.

BELZONA FACTS

This pump was in service for seven years with no damage until the unit was removed from service for other reasons. Extending the life of the pump diffuser saved the plant tremendous replacement costs.

PICTURES

1. The diffuser removed for repairs
2. Damage on flow surface
3. Close up of cavitation pitting
4. Repairs in progress using a rotating jig to create the internal shape and dimension without machining



For more examples of *Belzona Know-How In Action*, please visit <http://khia.belzona.com>



Belzona products are manufactured under an ISO 9000 Registered Quality Management System.

UK • USA • Canada • China
www.belzona.com

