

PRISON MUSEUM STEPS MADE SAFE WITH BELZONA

CUSTOMER

Prison Museum in the Bay Area of California

APPLICATION DATE

June 1984

APPLICATION SITUATION

Stairway into the prison museum

PROBLEM

Severe weathering damage caused an unsafe condition for tourists visiting the site. Exposed rebar was causing the damage to accelerate.

PRODUCTS

Belzona® 4111 (Magma Quartz)

SUBSTRATE

Steel reinforced concrete

APPLICATION METHOD

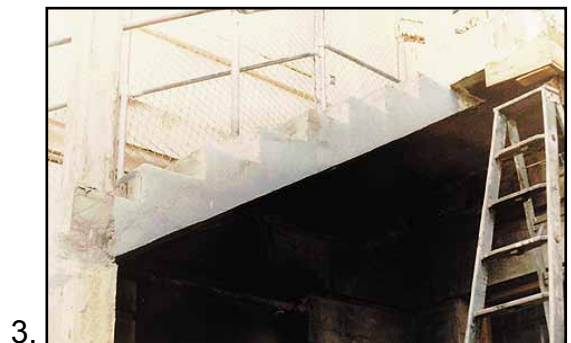
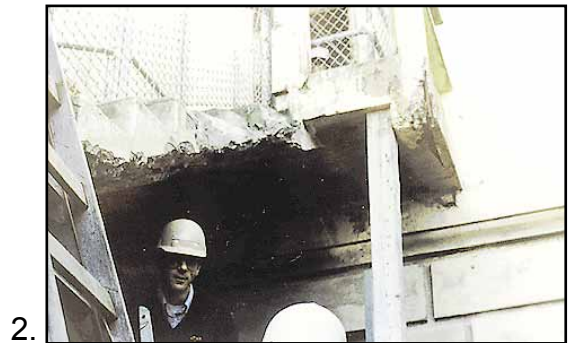
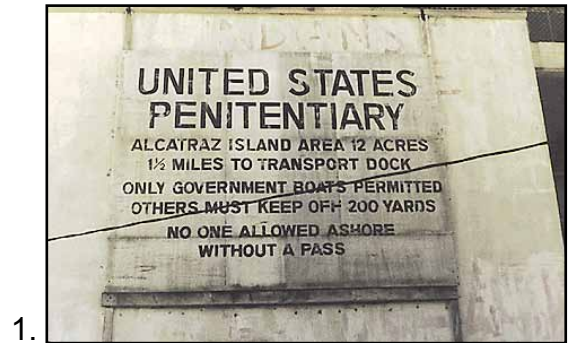
The application was carried out in accordance with Belzona Know-How System Leaflet FPA-1 .

BELZONA FACTS

The application was carried out with Belzona® 4111 molded in place with formers. Today, Belzona® 4141 (Magma Build) would make for a faster, easier repair. The hazardous conditions were eliminated and the repair is still inservice as of March, 1996.

PICTURES

1. Sign at entrance
2. Damage on underside of stairs, note exposed rebar on landing
3. Completed repair to stair
4. Repairs were also made to chipped concrete on stair tops



For more examples of *Belzona Know-How In Action*, please visit <http://khia.belzona.com>



Belzona products are manufactured under an ISO 9000 Registered Quality Management System.

UK • USA • Canada • China
www.belzona.com

