

BELZONA NON-STICK COATING FOR ICE CUBE IMPELLER

CUSTOMER

Chemical Plant in Argentina

APPLICATION DATE

December 1995

APPLICATION SITUATION

Impeller of a system distributing special ice cubes throughout the plant

PROBLEM

The ice cubes are manufactured on a large scale and distributed to the various units of the plant. They stick to the impeller, clogging the system and affecting production.

PRODUCTS

Belzona® 1341 (Supermetalgilde)

SUBSTRATE

Stainless Steel

APPLICATION METHOD

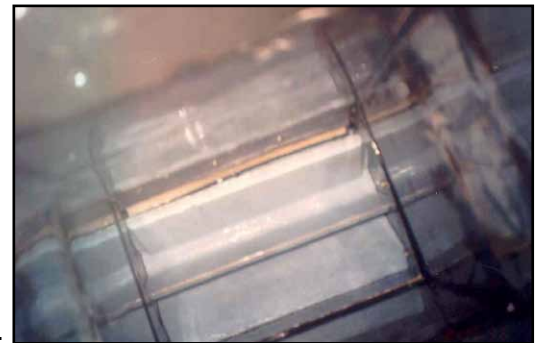
In accordance with a modified Belzona Know-How System Leaflet CEP-3

BELZONA FACTS

The customer had tried other coatings in an attempt to solve the problem but only the Belzona® 1341 achieved the desired effect. There is no longer a need to wash or chip the ice off the impeller vastly reducing the downtime of the plant. The customer is now considering applying the same treatment to the next part of the distribution system, a stainless steel worm which suffers the same problems.

PICTURES

1. View of the ice distribution system
2. The impeller as seen through the inspection hatch, coated with Belzona® 1341



For more examples of *Belzona Know-How In Action*, please visit <http://khia.belzona.com>



Belzona products are manufactured under an ISO 9000 Registered Quality Management System.

UK • USA • Canada • China
www.belzona.com

