

## MULTIPLE BELZONA REPAIRS TO 72” DIAMETER STEEL PIPE EMBEDDED IN CONCRETE

### CUSTOMER

Nuclear Power Plant in New Jersey

### APPLICATION DATE

February 1996

### APPLICATION SITUATION

Service water system piping (condenser outlet pipe to cooling tower)

### PROBLEM

The 72” diameter steel pipe embedded in concrete was corroded and had developed through wall leaks.

### PRODUCTS

Belzona® 1311 (Ceramic R-Metal)

Belzona® 1321 (Ceramic S-Metal)

Belzona® 2111 (D&A Hi-Build Elastomer)

Belzona® 4111 (Magma-Quartz)

### SUBSTRATE

Carbon steel (ASTM A283 grade C)

### APPLICATION METHOD

Application was carried out in accordance with Belzona Know-How System Leaflets VPF-1, VPF-2 and FPA-6.

### BELZONA FACTS

The Belzona repair saved four additional outage days over alternative repairs saving an estimated \$4 million.

### PICTURES

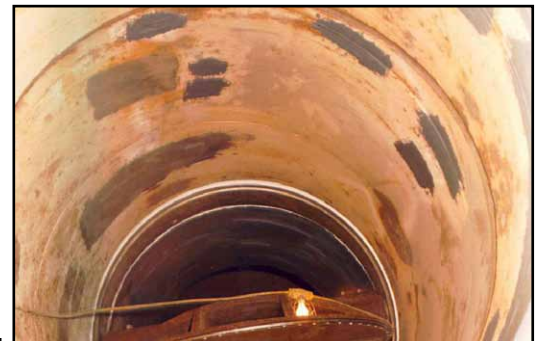
1. View of the eroded pipe before work commenced
2. Completed application to steel pipe
3. Overall view of repair area showing patch repairs to concrete pipe and application to steel pipe in background



1.



2.



3.

For more examples of *Belzona Know-How In Action*, please visit <http://khia.belzona.com>



ISO 9001:2008  
Q 09335  
ISO 14001:2004  
EMS 509612

Belzona products are  
manufactured under an ISO  
9000 Registered Quality  
Management System.

UK • USA • Canada • China  
[www.belzona.com](http://www.belzona.com)

