

## BELZONA PAVES THE WAY TO PARADISE

### CUSTOMER

Florida Department of Transportation

### APPLICATION DATE

October - November, 2002

### APPLICATION SITUATION

Bridge, Florida Keys

### PROBLEM

Bridge suffering from thermal cycling, heavy vehicular traffic and vibration, creating potholes and cracks.

### PRODUCTS

Belzona® 4111 (Magma-Quartz)

Belzona® 4151 (Magma Quartz Resins)

### SUBSTRATE

Concrete

### APPLICATION METHOD

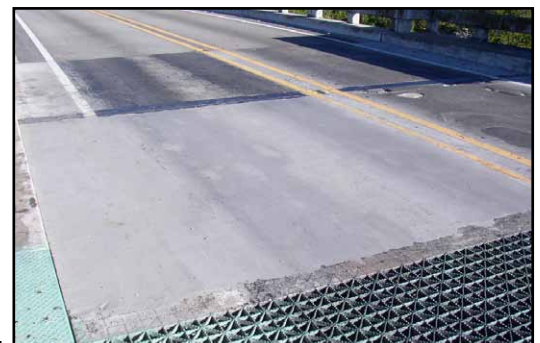
Application was carried out in accordance with Belzona Know-How System Leaflets FPA-1 and FPA-5.

### BELZONA FACTS

Other conventional repair methods failed in very short time. Belzona® 4151 was mixed with pea gravel. This provided a base layer of material in the cracks and potholes. This was then overcoated with Belzona® 4111. The application took place overnight to minimize traffic interruptions.

### PICTURES

1. & 2. & 3. Show various trouble spots
2. 4. Ready for traffic



For more examples of *Belzona Know-How In Action*, please visit <http://khia.belzona.com>



Belzona products are manufactured under an ISO 9000 Registered Quality Management System.

UK • USA • Canada • China  
[www.belzona.com](http://www.belzona.com)

