

## BELZONA REPAIR AND PROTECTION OF REFRIGERATION UNIT

### CUSTOMER

Five star hotel in Egypt

### APPLICATION DATE

April 2004

### APPLICATION SITUATION

End covers and tube sheet of a chiller unit from the hotel's air conditioning plant.

### PROBLEM

Erosion-corrosion on all water side components. Particularly deep erosion on tube sheet around the tubes.

### PRODUCTS

Belzona® 1311 (Ceramic R-Metal)

Belzona® 1321 (Ceramic S-Metal)

### SUBSTRATE

Steel

### APPLICATION METHOD

Application was carried out in accordance with Belzona Know-How System Leaflets HEX-1 and HEX-3.

### BELZONA FACTS

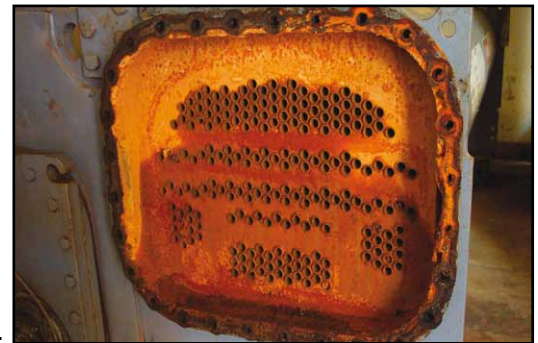
Eroded metal rebuilt with Belzona® 1311 before all surfaces were protected with two coats of Belzona® 1321. Long term repair and protection given insitu, with minimum disruption to plant operation.

### PICTURES

1. General view of the refrigeration unit
2. The corroded tube sheet
3. The degree of erosion clearly evident after surface preparation
4. Completed application



1.



2.



3.



4.

For more examples of *Belzona Know-How In Action*, please visit <http://khia.belzona.com>



Belzona products are manufactured under an ISO 9000 Registered Quality Management System.

UK • USA • Canada • China  
[www.belzona.com](http://www.belzona.com)

