

BELZONA REPAIR TO SHAFT AND KEYWAY OF DIESEL ENGINE TEST DYNAMOMETER

CUSTOMER

Engine repair facility in Egypt

APPLICATION DATE

April 2003

APPLICATION SITUATION

Dynamometer used to measure engine power output

PROBLEM

The tapered coupling and keyway were damaged on the main power input shaft.

PRODUCTS

Belzona® 1111 (Super Metal)

SUBSTRATE

Steel

APPLICATION METHOD

Application was carried out in accordance with Belzona Know-How System Leaflets MPT-2 and MPT-4. A former was used to restore tapered shaft profile and at same time locate the keyway correctly.

BELZONA FACTS

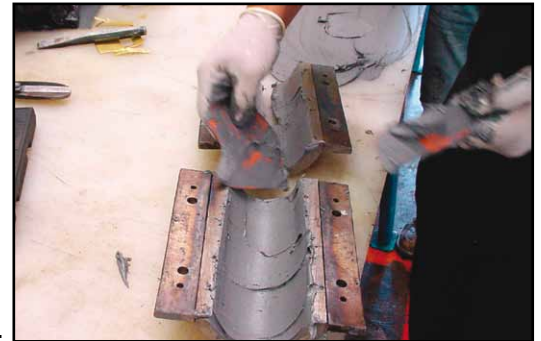
Both ends of shaft repaired without having to dismantle the equipment.

PICTURES

1. The damaged shaft and keyway
2. Application of Belzona® 1111 to the former
3. Former being clamped onto the shaft
4. Both ends of shaft rebuilt



1.



2.



3.



4.

For more examples of *Belzona Know-How In Action*, please visit <http://khia.belzona.com>



Belzona products are manufactured under an ISO 9000 Registered Quality Management System.

UK • USA • Canada • China
www.belzona.com

