

BELZONA PROTECTS CHEMICAL CONTAINMENT AREAS

CUSTOMER

Coal Power Plant, Galicia, Spain

APPLICATION DATE

February 2008

APPLICATION SITUATION

Four chemical containments for polyester tanks filled with sodium hypochlorite

PROBLEM

Occasional spills during the operations of filling up the tanks caused major damage to the previous coating

PRODUCTS

Belzona® 4311 (Magma CR1)

Belzona® 4131 (Magma Screed)

SUBSTRATE

Concrete

APPLICATION METHOD

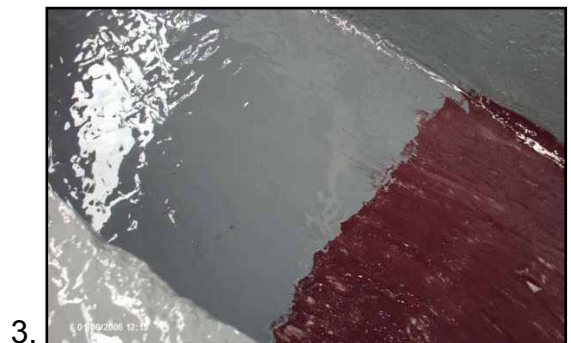
Application was carried out in accordance with Belzona Know-How System Leaflet TCC-15.

BELZONA FACTS

Belzona® 4311 had already proven itself within the power industry that it is a very effective coating for many chemicals

PICTURES

1. Removing the old coating
2. Blasting the surface to be coated
3. Applying the second layer of Belzona® 4311 over the first coat
4. One of the containment areas after one month



For more examples of *Belzona Know-How In Action*, please visit <http://khia.belzona.com>



Belzona products are manufactured under an ISO 9000 Registered Quality Management System.

UK • USA • Canada • China
www.belzona.com

