

BELZONA PUMP REPAIR COMPLETED WITH PORTABLE LATHE

CUSTOMER

Coal Power Plant, West Virginia

APPLICATION DATE

March, 2003

APPLICATION SITUATION

Two 14 diameter shafts for cooling towers pumps"

PROBLEM

Damage on packing gland area due to overtightning of packing and contaminated river water

PRODUCTS

Belzona® 1111 (Super Metal)

SUBSTRATE

Steel

APPLICATION METHOD

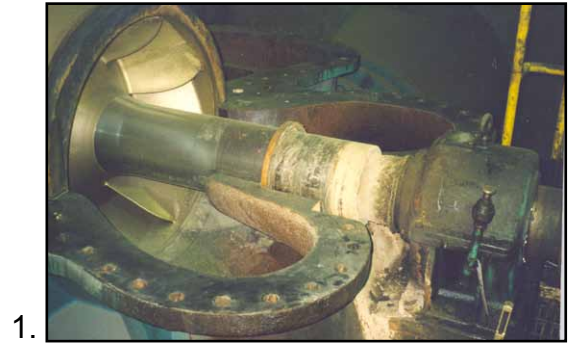
Application carried out in accordance with the Belzona Know-How System Leaflet MPT-1. A portable lathe was used to machine shafts in place.

BELZONA FACTS

Cost of repairing shafts was less than \$2,000.00, saving thousands on removing, shipping and downtime. The only alternative was flame welding or sleeving costing more and resulting in the possibility of warping the shaft making Belzona® 1111 the best choice.

PICTURES

1. Damage to cooling tower pump shaft
2. Set up and undercutting shaft
3. Applying Belzona® 1111
4. Finished shaft repair



For more examples of *Belzona Know-How In Action*, please visit <http://khia.belzona.com>



Belzona products are manufactured under an ISO 9000 Registered Quality Management System.

UK • USA • Canada • China
www.belzona.com

