

BELZONA REFITS CRUSHER BEARING

CUSTOMER

Limestone quarry, Silex, MO

APPLICATION DATE

Summer 1996

APPLICATION SITUATION

New 12 dia. bearing had to be fitted to worn shaft on crusher"

PROBLEM

Perfect fit required onto rough shaft to avoid premature failure. Previous repair with competitor failed.

PRODUCTS

Belzona® 1111 (Super Metal)

SUBSTRATE

Steel

APPLICATION METHOD

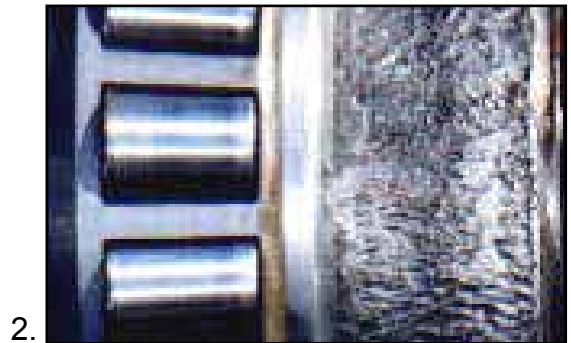
Application carried out in accordance with the Belzona Know-How System Leaflet MPT-7. The bearing was heated to 250°F. Belzona® 1111 was applied around the journal and the hot bearing quickly slid into place.

BELZONA FACTS

The alternative was at least a 30 day (and lost production) wait for a new shaft during the peak season. Follow up in February 2008, the repair is still holding up.

PICTURES

1. Overall view of the crusher
2. Damaged journal
3. Belzona® 1111 applied on the journal
4. Finished bearing refit



For more examples of *Belzona Know-How In Action*, please visit <http://khia.belzona.com>



Belzona products are manufactured under an ISO 9000 Registered Quality Management System.

UK • USA • Canada • China
www.belzona.com

