

## BELZONA EMERGENCY LEAK SEALING

### CUSTOMER

Waste Water Utility / Oklahoma

### APPLICATION DATE

April, 2006

### APPLICATION SITUATION

Main effluent line operating at 35psi could not be shut down since plant already operating above normal capacity.

### PROBLEM

Line sprung a leak in an odd spot right next to a chemical injection nozzle which made the repair impossible with a normal clamp.

### PRODUCTS

Belzona 1291 (ES Metal)

Belzona 1221 (Super E Metal)

### SUBSTRATE

Carbon steel

### APPLICATION METHOD

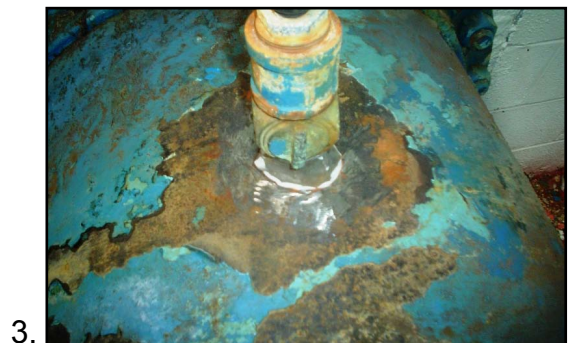
Application was carried out in accordance with the Belzona Know-How System Leaflet VPF-11a.

### BELZONA FACTS

Belzona saved the day for this plant as they feared this leak would keep growing. Two years later this repair is still holding fine.

### PICTURES

1. Rags over leak to keep the spray down
2. Sanding the leak and getting wet
3. Belzona® 1291 applied and leak stopped
4. Belzona® 1221 applied and leak fixed for good



For more examples of *Belzona Know-How In Action*, please visit <http://khia.belzona.com>



Belzona products are manufactured under an ISO 9000 Registered Quality Management System.

UK • USA • Canada • China  
[www.belzona.com](http://www.belzona.com)

