

## BELZONA EMERGENCY SHAFT REPAIR AT PULP & PAPER FACILITY

### CUSTOMER

Pulp and Paper plant, Memphis, Tennessee, USA

### APPLICATION DATE

2008

### APPLICATION SITUATION

Shaft on the Primary paper machine.

### PROBLEM

A bearing had run dry of lubrication and caused the entire line to shut-down.

### PRODUCTS

Belzona® 1221 (Super E Metal)

### SUBSTRATE

Stainless steel

### APPLICATION METHOD

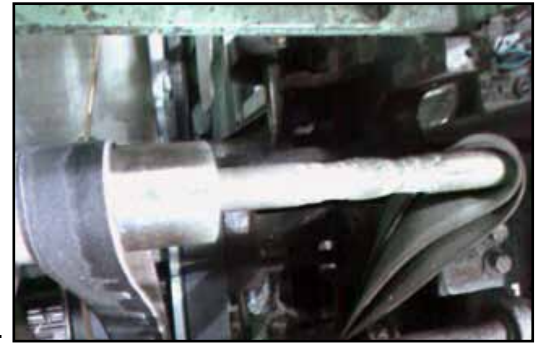
Application was carried out in accordance with Belzona Know-How System leaflet MPT-2.

### BELZONA FACTS

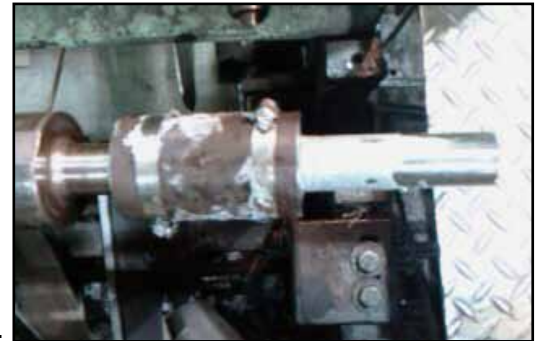
This roller was a critical in the operation of the plant. With this machine down the entire facility went down. The repair was performed during the lunch hour, saving thousands of dollars in down-time.

### PICTURES

1. Shaft prior to repair
2. Shaft during repair with former in place
3. Shaft after repair



1.



2.



3.

For more examples of *Belzona Know-How In Action*, please visit <http://khia.belzona.com>



Belzona products are manufactured under an ISO 9000 Registered Quality Management System.

UK • USA • Canada • China  
[www.belzona.com](http://www.belzona.com)

