

BELZONA OFFERS THE KEYWAY TO SUCCESS

CUSTOMER

Washington, USA

APPLICATION DATE

1992

APPLICATION SITUATION

Large punch press keyway.

PROBLEM

The keyway on this large punch press had been pounded oversize front, with a back and forth action ending in a hard stop each way.

PRODUCTS

Belzona 1111 (Super Metal)

SUBSTRATE

Steel

APPLICATION METHOD

Both halves of the keyway were worn, but the shaft was worn more than the sheave. The keyway was grit blasted for maximum bonding. The sheave side was formed first then the shaft was formed, using the sheave to center the new keyway. The application was carried out in accordance with Belzona Know-How System Leaflet MPT-4.

BELZONA FACTS

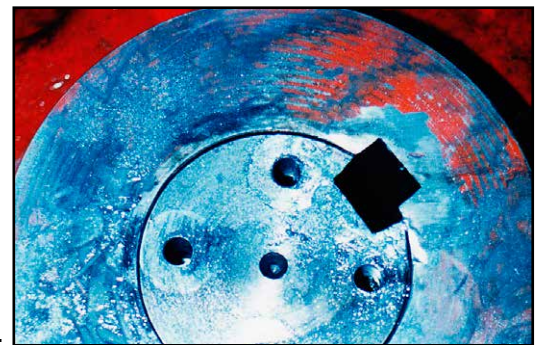
Removal of the shaft for machining would take much too long. The keyway was reformed in-place and the punch press is still operating 22 years later. This keyway takes a beating daily and nothing works as well as Belzona.

PICTURES

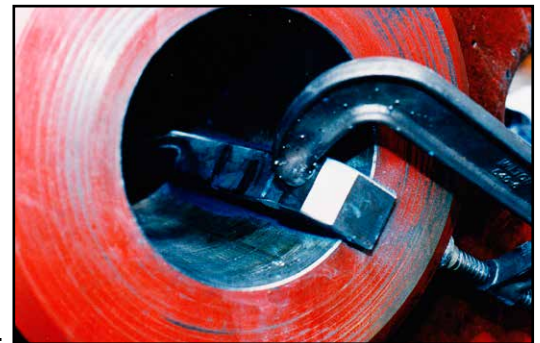
1. Punch press, blasting the keyway
2. Before sheave removal, showing damage to the keyways
3. Forming the sheave keyway
4. Forming the shaft keyway



1.



2.



3.



4.

For more examples of *Belzona Know-How In Action*, please visit <http://khia.belzona.com>



Belzona products are manufactured under an ISO 9000 Registered Quality Management System.

UK • USA • Canada • Thailand
www.belzona.com

