

BELZONA REBUILDS BOW THRUSTER

CUSTOMER

BC, Canada

APPLICATION DATE

1999

APPLICATION SITUATION

Bow thruster

PROBLEM

The fiberglass surround designed to eliminate bimetallic corrosion around the bow thruster insert was not able to protect the area from cavitation attack.

PRODUCTS

Belzona 1111 (Super Metal)
Belzona 1341 (Supermetalglide)

SUBSTRATE

Aluminum and stainless steel

APPLICATION METHOD

Application carried out in accordance with Belzona Know-How System Leaflet SOS-1/2

BELZONA FACTS

The use of Belzona allowed localized repairs to be executed with a minimal amount of down time.

PICTURES

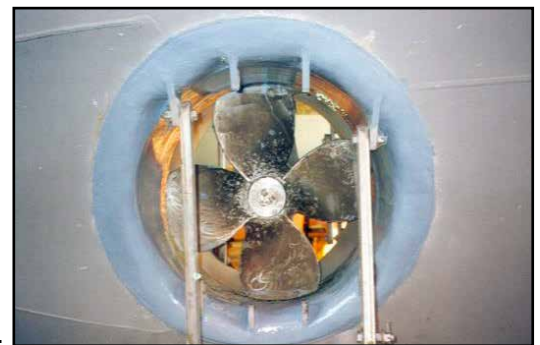
1. Fairing in the damaged areas
2. Fairing in the damaged areas
3. Entire bow thruster protected with 2 coats of Belzona 1341 Supermetalglide.



1.



2.



3.

For more examples of *Belzona Know-How In Action*, please visit <http://khia.belzona.com>



Belzona products are manufactured under an ISO 9000 Registered Quality Management System.

UK • USA • Canada • Thailand
www.belzona.com

